

# Above *and* Beyond



2018

SHIPPER & PROCESSOR DIRECTORY

# Going Above & Beyond

Travis Blacker, the Idaho Potato Commission's Industry Relations Director, took flight with his drone this year to capture the beauty of the state as well as the Idaho® potato planting, growing, and harvest seasons.

His photos confirm what we already know—that Idaho® potato growers go above and beyond to grow the best potatoes anywhere.



Cover Photo: Did you know that pivot irrigation can cover 120 acres? The tracks show the perfect circle of the pivot. Aerial photos help growers identify where there might be dry spots in the field.

This page: Two low-row crossovers harvesting potatoes in Newdale, Idaho, under the careful watch of the Tetras.

Inset: How now does this thing work?



Travis Blacker

# IDAHO POTATO COMMISSION

# TABLE OF CONTENTS

<b>Eagle Office</b> PO Box 1670   661 S Rivershore Lane, Suite 230 Eagle, ID 83616 Tel (208) 334-2350   Fax (208) 334-2274	Idaho Potato Commission Retail Promotion Directors .....2
<b>Frank Muir</b> President/CEO	Idaho Potato Commission Foodservice Promotion Directors.....3
<b>Pat Kole</b> Vice President, Legal and Government Affairs	Our Most Popular Russet Varieties .....4
<b>Don Odiorne</b> Vice President, Food service/Website	Other Varieties .....10
<b>Seth Pemsler</b> Vice President, Retail/International	Licensed Fresh Idaho® Potato Shippers .....14
<b>Joanna Hiller</b> Director, Finance	Map of Major Potato-Growing Areas in Idaho ..... Center
<b>Traci Lofthus</b> Director, International Marketing	Idaho® Potato Brokers.....42
<b>Jamie Bowen</b> Manager, Domestic Marketing	Fresh Idaho® Potato Brand Listing .....48
<b>Jeweldean Hull</b> Executive Administrator/Special Projects Manager	Fresh Idaho® Potato Exporters.....49
<b>Gracie Bingham</b> Legal/Finance Assistant	Processed Idaho® Potato Exporters .....49
<b>Jarrell Vail</b> Media Specialist	Organic Idaho® Potato Suppliers.....49
<b>Macy Hack</b> Receptionist/Marketing Assistant	2018 Julian Dates.....49
<b>Idaho Falls Office</b> 3670 S. 25th E., Suite 3   Idaho Falls, ID 83404 Tel (208) 514-4236   Mobile (208) 360-9560 Fax (208) 514-4237	Shed ID Numbers.....52
<b>Travis Blacker</b> Industry Relations Director and 2018 Drone Photographer	Hints and Tips .....52
	Tracking Information.....52
	Idaho® Potato Processors.....56

Established in 1937, the Idaho Potato Commission (IPC) is a state agency that is responsible for promoting and protecting the famous Grown in Idaho® seal, a federally registered trademark that assures consumers they are purchasing genuine, top-quality Idaho® potatoes. Idaho's ideal growing conditions, including rich, volcanic soil, climate, and irrigation, differentiate Idaho® potatoes from potatoes grown in other states.

This directory is published by the Idaho Potato Commission and contains a listing of licensed fresh shippers, brokers, and processors at the time of publication. IPC does not recommend individual shippers or processors, but the ones listed here are genuine Idaho® potatoes, and their price and products reflect the superior quality of the raw materials they use. Customers who have unique requirements will find Idaho suppliers well equipped and eager to fill their needs. 2018 Edition.



Always look for these *Grown in Idaho*® seals for the best potatoes.

[www.idahopotato.com/directory](http://www.idahopotato.com/directory)

Bookmark and visit this link for the most current directory listings.

# Retail PROMOTION DIRECTORS

**SETH PEMSLER**

VP of Retail/International

Office 208 334-2350

Cell 208 830-8384

Fax 208 334-2274

[spemsleng@potato.idaho.gov](mailto:spemsleng@potato.idaho.gov)**KENT BEESLEY**

Retail Promotion Director

Cell 208 631-9760

[kbeesley@potato.idaho.gov](mailto:kbeesley@potato.idaho.gov)**WESTERN U.S.  
& CANADA**Arizona, California,  
Colorado, Idaho, Iowa,  
Kansas, Minnesota,  
Montana, Nebraska,  
Nevada, New Mexico,  
North Dakota, Oregon,  
South Dakota, Utah,  
Washington, Wyoming,  
and Canada**BILL SAVILONIS**

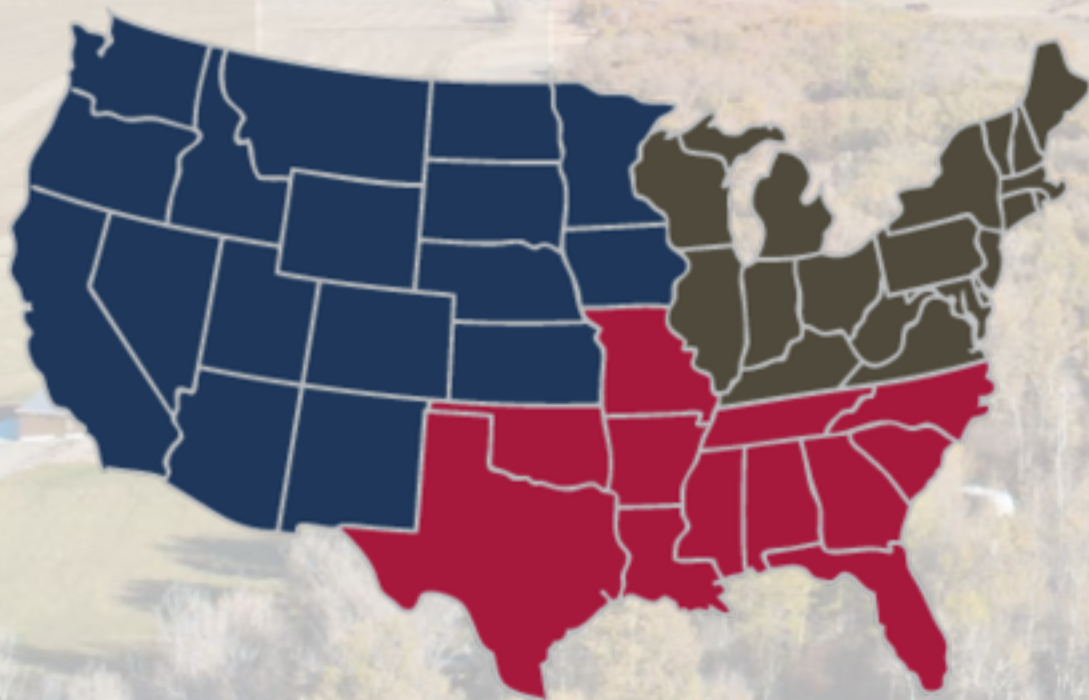
Retail Promotion Director

Cell 904 610-4475

[bsavilonis@potato.idaho.gov](mailto:bsavilonis@potato.idaho.gov)**SOUTHERN U.S.**Alabama, Arkansas,  
Florida, Georgia, Louisiana,  
Mississippi, Missouri, North  
Carolina, Oklahoma,  
South Carolina,  
Tennessee, Texas**DAVE RHODES**

Retail Promotion Director

Cell 317 627-9377

[dave.rhodes@potato.idaho.gov](mailto:dave.rhodes@potato.idaho.gov)**NORTHEASTERN U.S.**Connecticut, Delaware,  
District of Columbia,  
Illinois, Indiana, Kentucky,  
Maine, Maryland,  
Massachusetts, Michigan,  
New Hampshire,  
New Jersey, New York,  
Ohio, Pennsylvania,  
Rhode Island, Vermont,  
Virginia, West Virginia,  
Wisconsin

Teton Mountains and aspen groves. It's harvest/fall time in Idaho, and this is seed potato country.

# Foodservice PROMOTION DIRECTORS



**DON ODIORNE**  
VP of Foodservice/Website  
Office 208.334.2350  
Cell 208.830.9887  
Fax 208.334.2274  
dodiorne@potato.idaho.gov



**ARMAND LOBATO**  
Foodservice  
Promotion Director  
Cell 303.988.4565  
alobato@potato.idaho.gov

**WESTERN U.S.**  
Arizona, California, Colorado,  
Idaho, Kansas, Montana,  
Nebraska, Nevada,  
New Mexico,  
North Dakota, Oregon,  
South Dakota, Utah,  
Washington, Wyoming



**STANLEY TROUT**  
Foodservice  
Promotion Director  
Cell 615.971.0505  
strout@potato.idaho.gov

**SOUTHEASTERN U.S.**  
Alabama, Arkansas, District  
of Columbia, Florida,  
Georgia, Kentucky, Louisiana,  
Maryland, Mississippi,  
Missouri, North Carolina,  
Oklahoma, South Carolina,  
Tennessee, Texas, Virginia,  
West Virginia



**MATT BRIGOTTI**  
Foodservice  
Promotion Director  
Cell 330.414.5618  
mbrigotti@potato.idaho.gov

**NORTHEASTERN U.S.**  
Connecticut, Delaware,  
Illinois, Indiana, Iowa, Maine,  
Massachusetts, Michigan,  
Minnesota, New Hampshire,  
New Jersey, New York, Ohio,  
Pennsylvania, Rhode Island,  
Vermont, Wisconsin





# OUR MOST POPULAR RUSSET *Varieties*

## RUSSET BURBANK

**BACKGROUND:** Developed in 1914 by Lou Sweet, a previous president of the Potato Association of America. Scientist Luther Burbank is credited with the discovery of the original seeds. While Idaho growers have successfully produced many varieties over the years, the Russet Burbank is their greatest commercial success and has established a strong brand equity for the state. A late-maturing variety that requires a 140- to 150-day growing season.

**APPEARANCE:** The exterior skin is relatively thin and light brown in color. The exterior shape is oval and slightly flattened, with few shallow eyes. The interior is off-white to ivory and moderately dense.

**FLAVOR PROFILE:** A distinctive, earthy potato flavor. The high solid (starch) yields a grainy texture and slightly chewy skin. Bakes up dry and fluffy; fries crisp and golden brown.

**USAGE:** Fresh, frozen, or dehydrated, this variety is ideal for all preparation styles.



## RUSSET NORKOTAH

**BACKGROUND:** Released in 1987 by North Dakota State University, this variety now ranks second in popularity for fresh-market use. Attractive type (refers to consistent oval shape); a high percentage of No. 1 potatoes is common with this early-maturing variety. Available August through June.

**APPEARANCE:** Excellent conformation; attractive medium-brown color with a long to oblong shape.

**FLAVOR PROFILE:** A mild potato flavor with a soft texture and moderate density. Tends to bake up creamy and moist, not grainy. Moderately chewy skin. White to pale yellow interior. Medium specific gravity for most; newer generations grown in Idaho have higher starch content.

**USAGE:** Grown primarily for the fresh market. Because of the uniform appearance, has had good success in the retail grocery segment and foodservice. Well suited to all preparation types.





Idaho® potatoes are unmatched in their exceptional quality, wholesome taste, and extensive variety. From the go-to Russet Burbank to the popular Russet Norkotah, we're proud to offer you the best potatoes from the best earth on Earth.™



### ALTURAS RUSSET

**BACKGROUND:** A late-maturing, high-yielding russet potato cultivar with a high tuber specific gravity that was released in 2002 by the USDA/ARS and the Agricultural Experiment Stations of Idaho, Oregon, and Washington. A high percentage of No. 1 potatoes is common with this variety.

**APPEARANCE:** Excellent conformation and an attractive medium-brown color with an oblong shape. They tend to be short.

**FLAVOR PROFILE:** Culinary quality is high, with larger tubers suitable for fresh market if heavily russeted skin is not essential.

**USAGE:** Grown primarily for the processed market. Its resistance to the accumulation of sugars during long-term storage also makes it suitable for processing out of storage into french fries. Makes excellent mashed potatoes.



### BANNOCK RUSSET

**BACKGROUND:** Bannock Russet was released in 1999 by the USDA Agricultural Research Service and the Agricultural Experiment Stations of Idaho, Oregon, and Washington. It is a late-maturing, oblong russet variety with excellent fresh-pack and processing qualities.

**APPEARANCE:** It has an attractive russeted skin and short tuber length. Excellent culinary qualities also make it suitable for the fresh market. Bannock Russet, in comparison with Russet Burbank, has consistently produced greater U.S. No. 1 yields.

**FLAVOR PROFILE:** Similar to Russet Burbank.

**USAGE:** When stored at 45°F, the Bannock Russet produces a lighter fry color and has a lower glucose concentration than a Russet Burbank. Medium to high solids.



### BLAZER RUSSET

**BACKGROUND:** Named a variety in 2005, this is one of the newest graduates of the potato-breeding program of U.S. university research scientists in the Intermountain West and Pacific. It is ready to harvest earlier than other leading potatoes, meaning the Blazer Russet can replenish dwindling supplies of potatoes remaining in cold storage from the previous harvest.

**APPEARANCE:** The oblong, medium to large tubers average about 7 to 8 oz. each. They have characteristic light russeting on their brown to tan skin, with firm, cream-white, or white flesh inside.

**FLAVOR PROFILE:** Similar to Russet Burbank; yields dry and fluffy baked potatoes and golden fries with crisp outer flesh and dry mashed flavor center.

**USAGE:** Well suited for fresh-market sale or for potato processors to make into frozen potato products.



## CLASSIC RUSSET

**BACKGROUND:** Released by the Tri-State Breeding Program in 2009, this early to medium variety is a possible replacement for the popular Norkotah. It has excellent fresh-merit ratings and exceeds other leading potatoes in its overall score.

**APPEARANCE:** Classic Russet has excellent tuber shape and appearance, and a high proportion of No. 1s, high solids, and good fry color.

**FLAVOR PROFILE:** The Classic Russet has a higher protein content than many of the standard russet varieties (22–32 percent greater). It also has a high culinary rating, with qualities similar to Russet Burbank. It is light and fluffy in baking and produces light fries after harvest and shortly thereafter.

**USAGE:** Sold in fresh-pack markets and processed right out of the field or during the early storage season.



## CLEARWATER RUSSET

**BACKGROUND:** Released by the Tri-State Program in 2009, this is a medium to late variety for both fresh and processing markets. It has a high protein content, measuring 38 percent greater than Russet Burbank. This variety has an exceptionally high yield average, specific gravity, and high solids.

**APPEARANCE:** It produces oblong tubers with brown, medium-heavy russet skin. The eyes are shallow in depth and intermediate in number and are evenly distributed. Tuber set is low, and average tuber size is medium. The flesh is white to creamy white and firm.

**FLAVOR PROFILE:** Qualities similar to Russet Burbank. A light and fluffy baker with excellent fry characteristics and taste, often outperforming Ranger Russet and Russet Burbank in tests.

**USAGE:** Its excellent fry color out of storage and its attractiveness make this variety suitable for both processing and fresh-market usage. It has a high specific gravity and is resistant to sugar ends, as well as most internal and external tuber defects.



## PREMIER RUSSET

**BACKGROUND:** A product of the cooperative USDA/ARS/University of Idaho breeding program in Aberdeen. From a 1993 cross between two varieties. It has been evaluated for several years in public and industry trials throughout the western United States.

**APPEARANCE:** A mid- to late-season variety notable for its high yield of oblong to long, medium-russet-color tubers, high specific gravity, excellent fry color from cold storage, and resistance to sugar ends. Brown skin color and white flesh interior.

**FLAVOR PROFILE:** Culinary quality is high, with larger tubers suitable for fresh market.

**USAGE:** Good yields of larger-size 12 oz. and larger tubers versus the Russet Burbank. Its resistance to the accumulation of sugars during long-term storage also makes it suitable for processing out of storage into french fries. Makes excellent mashed potatoes and dry, fluffy baked potatoes.

Snow-capped tetons at the end of June means potatoes will have irrigation water well into the late season.





## RANGER RUSSET

**BACKGROUND:** Ranger Russet is a medium- to late-maturing russet potato jointly released by the USDA and the University of Idaho in 1991. It has high solids and is used mostly for frozen processing and occasionally for fresh pack.

**APPEARANCE:** Long and slightly flattened shape with a medium-russet-color skin and white flesh. Eyes are numerous and medium to deep. Produces a consistently long shape and high percentage of U.S. No. 1 potatoes.

**FLAVOR PROFILE:** Culinary traits: bakes up dry and fluffy with outstanding potato flavor. Fries crisp and light golden in color.

**USAGE:** Grown primarily for the processed market. Because of the high specific gravity (averaging 1.095 in Idaho) and low sugars, this variety processes well for lightly colored fries with good texture.



## UMATILLA RUSSET

**BACKGROUND:** Umatilla Russet was jointly released by Oregon, Washington, Idaho, and the ARS/USDA in 1998. This cultivar has attributes that make it an excellent choice for frozen processing.

**APPEARANCE:** Attributes include a high specific gravity, good fry color, uniform tuber shape, and good resistance to internal physiological disorders. Umatilla produces significantly more U.S. No. 1 tubers 12 oz. or larger than the Russet Burbank typically does.

**FLAVOR PROFILE:** Taste test panels have rated the flavor and texture of Umatilla to be at least as good as or better than Russet Burbank.

**USAGE:** Grown for fresh and frozen french fry processing, with fry colors lighter than the Russet Burbank. In general, Umatilla Russet has less glucose and sucrose accumulation in storage compared to that of Russet Burbank.

# Percent of Fall Potatoes Planted to Major Varieties—Idaho

TOTAL: 2016-2017

VARIETY	PERCENT OF PLANTED ACRES	
	2016	2017
Russet Burbank	51.3	43.2
Russet Norkotah	16.7	18.4
Ranger Russet	13.1	17.3
Bannock Russet	1.9	2.9
Umatilla Russet	2.1	2.7
Nor Donna Red	N/A	2.5
Norland Red	1.1	2.1
Clearwater Russet	1.4	1.8
Alturas Russet	1.7	N/A
Other	10.7	9.1



Warm summer days turn to cool nights  
in a showy transition with the  
St. Anthony Sand Dunes in the distance.





Traditionally, Idaho has been known for its russet potatoes. After all, that's what made us famous! We grow billions of pounds of potatoes each year—most of which are russet varieties. But many acres are now devoted to reds, yellows, and other niche varieties. So we continue to be a one-stop shop for ordering a wide array of excellent varieties.



### ALL BLUE

**APPEARANCE:** Smooth, oblong, medium size; deep blue to almost purple skin.

**Flavor Profile:** Moist, firm flesh with slightly grainy texture.

**Usage:** Fresh market. Especially suited to potato salads.



### BINTJE

**APPEARANCE:** Small to medium-size round tubers with golden skin and yellow flesh. Smooth and well rounded. Skin has a silk-like finish.

**FLAVOR PROFILE:** Exceptional flavor. Some describe it as having a unique, light, nut-like flavor.

**USAGE:** Best served roasted or as french fries; often seen as the standard for European-style or Belgian fries.



### FRENCH FINGERLING

**APPEARANCE:** Large fingerling tubers with smooth, dark, rose-red skin and waxy, yellow flesh.

**FLAVOR PROFILE:** Has a delicate, nutty flavor.

**USAGE:** Especially suited to potato salads, roasting, or sautéing.



### AMA ROSA

**APPEARANCE:** Small to medium-size, firm, oblong-shaped tubers with bright red skin and deep red flesh.

**FLAVOR PROFILE:** Sweet and creamy fingerlings.

**USAGE:** Ideal for baking, roasting, and grilling. They also make mouth-watering and colorful potato chips because they retain their sweetness and bright red color.



### CAL RED

**APPEARANCE:** The tubers have a bright red skin color, round and smooth shape, shallow eyes, and a medium specific gravity for reds. White flesh.

**FLAVOR PROFILE:** Waxy; makes a good potato salad; skin color stays red.

**USAGE:** Fresh market.



### HUCKLEBERRY GOLD

**APPEARANCE:** Round to oval tubers with purple skin and yellow flesh noted for their excellent culinary qualities and high level of antioxidants.

**FLAVOR PROFILE:** Good potato flavor.

**USAGE:** Primarily used as mashed potatoes and in salad preparations. Roasting or boiling are also popular cooking procedures.

# OTHER Varieties



## IDA ROSE

**APPEARANCE:** Oblong tubers with bright red skin that retains color during storage and moist, firm, white flesh. The skin can russet slightly in light soils.

**FLAVOR PROFILE:** Considered to be an excellent potato for baking, microwaving, and boiling. Ranks high in taste tests.

**USAGE:** General purpose. Popular as a salad potato.



## MILVA

**APPEARANCE:** Bright yellow flesh with pale yellow skin.

**FLAVOR PROFILE:** Waxy type. Suitable for boiling because it stays firm and does not readily discolor.

**USAGE:** General purpose. Popular as a salad potato.



## NORLAND

**APPEARANCE:** Tubers are oblong, smooth, slightly flattened, and medium red, with shallow eyes. Seldom off-type in shape. Color decreases after maturity. The deep, dark-red skin color is appealing when prepared with the skin on. White flesh. Baby reds typically command a premium price.

**FLAVOR PROFILE:** Moist texture, as the specific gravity is low to intermediate. Excellent potato flavor.

**USAGE:** Fresh—excellent for boiling, roasting, and salad preparations.



## PURPLE PASSION

**APPEARANCE:** Purple skin and dark purple flesh. High in antioxidants; ideal for fresh fingerling market, with few tuber defects.

**FLAVOR PROFILE:** Excellent fingerling flavor.

**USAGE:** Fresh market.



## PURPLE PERUVIAN

**APPEARANCE:** Fingerling tubers with purple skin and dry, earthy, bright purple flesh.

**FLAVOR PROFILE:** Mild potato flavor.

**USAGE:** Especially suited to potato salads, roasting, or sautéing.



## RED LA SODA

**APPEARANCE:** Light red or pink color, oval shape, with smooth skin and a deep red skin color. Eyes have medium depth.

**FLAVOR PROFILE:** Considered good for baking and boiling. Ranks high in taste tests. Its moderate specific gravity makes this a somewhat unusual red variety and provides a drier, fluffier texture than is common with reds.

**USAGE:** Fresh market.



## RED THUMB FINGERLING

**APPEARANCE:** Red skin, red flesh, and smooth skin make this 1-by-2-inch tuber highly appealing.

**FLAVOR PROFILE:** It is sweeter than Russian Banana potatoes but not as starchy as some potato varieties.

**USAGE:** This variety is best when roasted and is also suitable for potato salads.



## RUBY CRESCENT

**APPEARANCE:** Plants produce rosy-skinned tubers with moderately dry, yellow flesh.

**FLAVOR PROFILE:** Mild, slightly nutty flavor.

**USAGE:** Especially suited to potato salads or roasting.



## RUSSIAN BANANA

**APPEARANCE:** Small fingerling tubers with buff-yellow skin and light yellow, waxy-textured flesh.

**FLAVOR PROFILE:** Has a rich, buttery flavor.

**USAGE:** Especially suited to potato salads, roasting, or sautéing.



## TERRA ROSA

**APPEARANCE:** Red skin and red flesh, oblong shape.

**FLAVOR PROFILE:** Similar to other reds; ranks well in taste tests.

**USAGE:** Ideal for microwaving, frying, or baking; chips retain rosy color and resist fading.



## YELLOW FINN

**APPEARANCE:** Dark yellow, waxy flesh; flattened pear or oval shape; light, tan-yellow skin.

**FLAVOR PROFILE:** Waxiness gives it a moist texture accompanied by a rich, buttery taste that is slightly sweeter than Yukon Gold.

**USAGE:** Primarily fresh. Boiled, fried, baked, and mashed. Often used in potato salads.



## YUKON GEM

**APPEARANCE:** This round-oblong, yellow-fleshed tuber has an optimal size profile. It has pink, shallow eyes.

**FLAVOR PROFILE:** Good waxy to drier texture with a golden buttery taste.

**USAGE:** Excellent processed, with a notable taste profile for products such as chips. An excellent replacement or alternative to Yukon Gold for the fresh market. Also has been suitable for organic production.



## YUKON GOLD

**APPEARANCE:** Relatively light yellow skin color; yellow interior with moist flesh. Shallow eyes that are well distributed. A medium specific gravity.

**FLAVOR PROFILE:** Originally marketed as having a buttery flavor, which comes from a combination of the yellow flesh and moist texture. Good potato flavor.

**USAGE:** In foodservice, chefs have gravitated to the Yukon Gold image as a positive one for menu branding. Primarily used as mashed and in salad preparations. Roasting or boiling are also popular cooking procedures.

Farming business is a family business  
and often involves multiple generations.  
It's hard but rewarding work.





# Licensed Fresh Shippers



Licensed fresh shippers are Idaho-based companies that work with Idaho® potato growers to receive, sort, pack, and ship product out from an active shed.

## ARROWHEAD POTATO COMPANY [www.arrowheadpotatoes.com](http://www.arrowheadpotatoes.com)

**Mailing Address** PO Box 425 | Rupert, ID 83350

**Shipping Facility** 223 Scott Avenue | Rupert, ID 83350

**Tel** (208) 436-1209 | **Fax** (208) 436-0775

**Email** [office@arrowheadpotatoes.com](mailto:office@arrowheadpotatoes.com)

**Contact** Richard Fletcher, Sales Manager, [richard@arrowheadpotatoes.com](mailto:richard@arrowheadpotatoes.com), (208) 436-1239

This company is an exporter

Operating Season: Year-round

Transportation: Rail and Motor Freight

Shed ID: 55

### Foodservice Packs Available:

#### No. 1 Carton Count Sizes:

40 - 120

#### Foodservice No. 2s:

	6 oz min	10 oz and above	12 oz and above	Bulk
Carton	x	x		
Paper	x	x		
Burlap	x	x		

#### Retail Packs Available (lbs):

	4	5	8	10	15	20	25	50	100	Bulk
Paper								x		
Poly	x		x	x	x					
Mesh	x		x					x		
Burlap								x	x	

### Brands:

Arrowhead  
Buffalo  
Chief

### Varieties:

Russet Burbank  
Russet Norkotah



Hand lines supplement pivot irrigation to assure that all plants get the water they need to produce Idaho's famous potatoes.



## BENCH MARK POTATO CO. [www.benchmarkpotato.com](http://www.benchmarkpotato.com)

**Mailing Address** 4799 S Highway 191 | Rexburg, ID 83440  
**Shipping Facility** 4799 S Highway 191 | Rexburg, ID 83440  
**Tel** (208) 356-9295 | (208) 356-7321 | **Fax** (208) 356-9217  
**Email** [potato@ida.net](mailto:potato@ida.net)  
**Contacts** Kent Sutton, *General Manager*  
 Peggy Arnzen, *Sales*  
 Sven Erickson, *Sales and Trucking*

This company is an exporter

**Operating Season:** Year-round

**Transportation:** Rail and Motor Freight

**Shed ID:** 86

**Foodservice Packs Available:**

**No. 1 Carton Count Sizes:**

40 - 120, 10 oz Bakers

### Foodservice No. 2s:

	6 oz min	10 oz and above	12 oz and above	Bulk
Carton	x	x		
Paper	x	x		
Burlap	x	x		

### Retail Packs Available (lbs):

	4	5	8	10	15	20	25	50	100	Bulk
Paper								x		
Poly	x	x	x	x	x					
Mesh	x		x							
Burlap										

### Brands:

Farm Fresh  
 Pride of the Valley  
 Sutton Brothers

### Varieties:

Russet Burbank  
 Russet Norkotah  
 All Blue  
 Yukon Gem

**Did you know that 35 percent of Idaho® potatoes are transported by rail?**

**More fun facts: Idaho is #2 in barley and #7 in wheat production in the U.S. and, of course, #1 in potatoes!**





# CIRCLE VALLEY PRODUCE, LLC

**Mailing Address** PO Box 51260 | Idaho Falls, ID 83405

**Shipping Facility** 1370 Burgess | Idaho Falls, ID 83405

**Tel** (208) 524-2628 | **Fax** (208) 524-2630

**Contact** Kirk Hart, Manager, kirk.CircleV@yahoo.com

**Operating Season:** Year-round

**Transportation:** Rail and Motor Freight

**Shed ID:** 69

## Foodservice Packs Available

### No. 1 Carton Count Sizes:

40 - 120, 10 oz Bakers, Standards

### Foodservice No. 2s:

	6 oz min	10 oz and above	12 oz and above	Bulk
Carton	x	x		
Paper	x	x		
Burlap	x	x		

### Retail Packs Available (lbs):

	4	5	8	10	15	20	25	50	100	Bulk
Paper								x		
Poly	x	x	x	x						
Mesh	x	x	x							
Burlap								x		

## Brands:

Circle Valley

CV

## Varieties:

Russet Burbank

Russet Norkotah



Our new potato storage shed is a forethink to times past.

**Mailing Address** 1095 N Woodruff Ave | Idaho Falls, ID 83401  
**Shipping Facility** 4050 E Lincoln Road | Idaho Falls, ID 83401  
**Tel** (208) 557-2528 | **Toll-Free** 800-432-4671 | **Fax** (208) 557-2535  
**Email** lance@eagleeyeproduce.com

**Contacts** Lance Poole, *VP of Sales*, lance@eagleeyeproduce.com  
 Jared Neville, *Director of Supply*, jared@eagleeyeproduce.com  
 Coleman Oswald, *Director of Sales*, coleman@eagleeyeproduce.com  
 Alejandra Taylor, *Export Sales*, alejandra@eagleeyeproduce.com  
 Matt Simmons, *Sales/Packaging*, matts@eagleeyeproduce.com  
 Stetson Banta, *Sales*, stetsonb@eagleeyeproduce.com  
 Nick Beahm, *Sales*, nick@eagleeyeproduce.com  
 Shilo Copenhagen, *Sales*, shilo@eagleeyeproduce.com  
 Pete Delzell, *Sales*, pete@eagleeyeproduce.com

Al Guariglia, *Sales*, aguariglia@eagleeyeproduce.com  
 Collette Herrick, *Sales*, colletteh@eagleeyeproduce.com  
 Slade Scott, *Sales*, slades@eagleeyeproduce.com  
 Amanda Baker, *Key Account Rep*, amanda@eagleeyeproduce.com  
 Cortney Bradley, *Key Account Rep*, cortney@eagleeyeproduce.com  
 Dawn Ewing, *Key Account Rep*, dawne@eagleeyeproduce.com  
 Zane Hyde, *Supply Coordinator*, zaneh@eagleeyeproduce.com  
 Tifanee Pond, *Transportation*, tifanee@eagleeyeproduce.com  
 Jason Struhs, *Transportation*, jasons@eagleeyeproduce.com

This company is an organic potato supplier

This company is an exporter

Operating Season: Year-round

Transportation: Rail and Motor Freight

Shed IDs: 32, 443

**Foodservice Packs Available:**

**No. 1 Carton Count Sizes:**

40 - 120, 10 oz Bakers, Standards

**Other No. 1 Sizes:**

35 ct, 12 oz Bakers, Foil-Wrapped Bakers

**Foodservice No. 2s:**

	6 oz min	10 oz and above	12 oz and above	Bulk
Carton	x	x	x	x
Paper	x	x	x	x
Burip				

**Other No. 2 Sizes:**

6 oz min and 10 oz min in 50 lb Mesh

**Retail Packs Available (lbs):**

	4	5	8	10	15	20	25	50	100	Bulk
Paper								x		x
Poly	x	x	x	x	x	x				x
Mesh		x	x	x				x		x
Burip										

**Retail Packs Also Available In:**

1.5 lb Medley, 3 lb Poly, Tray Packs (2 and 4 Count), Shrink-Wrapped (Microwaveable), Foil-Wrapped

**Brands:**

Diced Blends  
 Farm Select  
 Fresh Harvest  
 Harvest Select  
 Harvest Time  
 Organic Select

**Varieties:**

Russet Burbank  
 Russet Norkotah  
 Gal Red  
 French Fingerling  
 Ida Rose  
 Norland  
 Purple Peruvian  
 Red La Soda  
 Ruby Crescent  
 Russian Banana  
 Yukon Gold



## GENESIS ORGANICS, LLC [www.genesisorganics.com](http://www.genesisorganics.com)

- Mailing Address** PO Box 5596 | Twin Falls, ID 83303-5596
- Corporate Office** 22199 Kimberly Rd. | Kimberly, ID 83341
- Shipping Facility** 138 S Custer St. | Glens Ferry, ID 83623
- Tel** (208) 366-3070 | (208) 313-8835 | **Fax** (208) 366-3307
- Email** [jtanner@genesisorganics.com](mailto:jtanner@genesisorganics.com)
- Contacts** Don McFarland, CEO/Owner, [dmcfarland@genesisorganics.com](mailto:dmcfarland@genesisorganics.com), (208) 734-0004  
 Manuel Flores, COO/Member, [mflores@genesisorganics.com](mailto:mflores@genesisorganics.com), (208) 420-1513  
 Jared Tanner, Sales/Marketing Manager, [jtanner@genesisorganics.com](mailto:jtanner@genesisorganics.com), (208) 313-8835

This company is an organic potato supplier

Operating Season: July through May

Transportation: Mot or Freight

Shed ID: 167

### Foodservice Packs Available:

**No. 1 Carton Count Sizes:**  
 40 - 120, 10 oz Bakers, Standards

### Other No. 1 Sizes:

Organics

### Retail Packs Available (lbs):

	4	5	8	10	15	20	25	50	100	Bulk
Paper								x		x
Poly		x								
Mesh		x								
Burlap										

### Retail Packs Also Available In:

3 lb Poly/Mesh, Organics

### Brands:

Genesis Organics

### Varieties:

Russet Burbank  
 Russet Norкота  
 Ciklamen  
 Dark Red Norland  
 Exempla  
 Francisca  
 Gogu Valley Red  
 Huckleberry Gold  
 Julinka  
 Lady Amarilla  
 Pacific Russet  
 Smilin' Eyes



It's not all work...we know how to relax too. Thousand Springs on the South Fork of the Snake River is one of the top fly fishing rivers in North America.

## GPOD OF IDAHO [www.gpodpotatoes.com](http://www.gpodpotatoes.com)

**Mailing Address** PO Box 514 | Shelley, ID 83274  
**Shipping Facility** 865 E 1400 N | Shelley, ID 83274  
**Tel** (208) 357-7646 | **Sales** (208) 357-7691 | **Fax** (208) 357-5151  
**Email** [gpod@gpod.org](mailto:gpod@gpod.org)  
**Contact** Ryan Bybee, Sales Manager, [ryan.bybee@gpod.org](mailto:ryan.bybee@gpod.org)  
 Calvin Butler, Sales, [calvin.butler@gpod.org](mailto:calvin.butler@gpod.org)

This company is an exporter

**Operating Season:** Year-round

**Transportation:** Rail and Motor Freight

**Shed ID:** 88

**Foodservice Packs Available:**

**No. 1 Carton Count Sizes:**

40 - 120, 10 oz Bakers

### Foodservice No. 2s:

	6 oz min	10 oz and above	12 oz and above	Bulk
Carton				
Paper	X	X		
Burlap				

### Other No. 2 Sizes:

Mesh No. 2 Pack—6 oz min and 10 oz and above

### Retail Packs Available (lbs):

	4	5	8	10	15	20	25	50	100	Bulk
Paper								X		
Poly	X	X	X	X	X	X				
Mesh										
Burlap										

### Brands:

COOK-RITE  
 GPOD  
 Junior  
 The Great Potato  
 Town & Country

### Varieties:

Russet Burbank  
 Russian Banana

## IDAHO FRESH PRODUCE, INC.

**Mailing Address** PO Box 2440 | Idaho Falls, ID 83403  
**Shipping Facility** 1550 Midway | Ammon, ID 83406  
**Tel** (208) 535-0077 | **Fax** (208) 535-7590  
**Contacts** Chad Webster, Sales, chad@idahofresh.net, (208) 535-0077 ext 1  
 Wes Parkinson, Sales, wes@idahofresh.net, (208) 535-0077 ext 3

This company is an exporter

**Operating Season:** Year-round

**Transportation:** Rail and Motor Freight

**Foodservice Packs Available:**

**No. 1 Carton Count Sizes:**

40 - 120, 10 oz Bakers

**Other No. 1 Sizes:**

50 lb Cartons, Bulk

**Foodservice No. 2s:**

Paper or Carton

**Retail Packs Available (lbs):**

	4	5	8	10	15	20	25	50	100	Bulk
Paper									x	
Poly		x	x	x	x	x				
Mesh		x		x						
Burlap										

**Brands:**

Elite

Value

**Varieties:**

Russet Burbank

Russet Norkotah

### COMPANY MARKETED BY IDAHO FRESH PRODUCE, INC.

**Shed 71 Rocky Mountain Produce**  
**Mailing Address** PO Box 356 | Rigby, ID 83442  
**Shipping Facility** 3908 E 200 N | Rigby, ID 83442  
**Tel** (208) 745-6651 | **Fax** (208) 745-9082

## MART PRODUCE CORPORATION [www.martproduce.com](http://www.martproduce.com)

**Mailing Address** PO Box 34 | Rupert, ID 83350  
**Shipping Facility** 100 E 70 N | Rupert, ID 83350  
**Tel** (208) 436-0611 | **Fax** (208) 436-4372  
**Contacts** Jim McBride, jim@martproduce.com  
 Craig Swensen, craig@martproduce.com

This company is an exporter

**Operating Season:** August - July

**Transportation:** Rail and Motor Freight

**Shed ID:** 49

**Foodservice Packs Available:**

**No. 1 Carton Count Sizes:**

40 - 120, 10 oz Bakers

**Foodservice No. 2s:**

	6 oz min	10 oz and above	12 oz and above	Bulk
Carton	x	x		
Paper	x	x		
Burlap	x	x		

**Retail Packs Available (lbs):**

	4	5	8	10	15	20	25	50	100	Bulk
Paper									x	
Poly		x	x	x	x					
Mesh		x	x							
Burlap									x	

**Brands:**

Circle T

Mart Brand

Teton Tater

**Varieties:**

Russet Burbank

Russet Norkotah



## NONPAREIL FARMS—IDAHO POTATO PACKERS [www.nonpareilbrand.com](http://www.nonpareilbrand.com)

**Mailing Address** 411 West Collins Road | Blackfoot, ID 83221  
**Corporate Office** 411 West Collins Road | Blackfoot, ID 83221  
**Tel** (208) 785-3030 | **Toll-Free** 800-522-2223 | **Fax** (208) 785-3656  
**Email** [sabend@gotspuds.com](mailto:sabend@gotspuds.com)  
**Contacts** Stephen Abend, COO, [sabend@gotspuds.com](mailto:sabend@gotspuds.com)  
 Jace Katseanes, CFO, [jkatseanes@gotspuds.com](mailto:jkatseanes@gotspuds.com)  
 Steve Thorne, Sales Manager, [sthorne@gotspuds.com](mailto:sthorne@gotspuds.com)  
 Dandee Hale, Sales, [dhale@gotspuds.com](mailto:dhale@gotspuds.com)  
 Rulon Robinson, Sales, [rrobinson@gotspuds.com](mailto:rrobinson@gotspuds.com)  
 Jeanne Leyland, Transportation, [jleyland@gotspuds.com](mailto:jleyland@gotspuds.com)

This company is an organic potato supplier

This company is an exporter

Operating Season: August - July

Transportation: Rail and Motor Freight

Shed ID: 82

Foodservice Packs Available:

No. 1 Carton Count Sizes:

40 - 120, 10 oz Bakers

Foodservice No. 2s:

	6 oz min	10 oz and above	12 oz and above	Bulk
Carton	x	x		
Paper	x	x		
Burlap				

Retail Packs Available (lbs):

	4	5	8	10	15	20	25	50	100	Bulk
Paper								x		
Poly	x	x	x	x	x	x				
Mesh		x	x	x				x		
Burlap								x		

Brands:

Angus  
 Betty Crocker  
 Broadway  
 Idaho Potato Packers (IPP)  
 Magic  
 Nonpareil  
 Prize Pack

Varieties:

Russet Burbank  
 Russet Norrikotah  
 Cal Red  
 French Fingerling  
 Norland  
 Russian Banana  
 Yukon Gold

## PLEASANT VALLEY POTATO, INC. [www.pleasantvalleypotato.com](http://www.pleasantvalleypotato.com)

**Mailing Address** PO Box 538 | Aberdeen, ID 83210  
**Shipping Facility** 275 E Elmore Ave | Aberdeen, ID 83210  
**Tel** (208) 397-4194 | **Fax** (208) 397-4756  
**Email** [rwahlen@pleasantvalleypotato.com](mailto:rwahlen@pleasantvalleypotato.com)  
**Contacts** Ryan Wahlen, Sales Manager, [rwahlen@pleasantvalleypotato.com](mailto:rwahlen@pleasantvalleypotato.com)  
 Teresa Esparza, Sales/Transportation, [tesparza@pleasantvalleypotato.com](mailto:tesparza@pleasantvalleypotato.com)

This company is an exporter

Operating Season: Year-round

Transportation: Rail and Motor Freight

Shed ID: 84

Foodservice Packs Available:

No. 1 Carton Count Sizes:

40 - 120, 10 oz Bakers

Other No. 1 Sizes:

10 oz and above, 12 oz min,

18 oz min, 50 lb Cartons

Foodservice No. 2s:

Burlap, Paper, or Carton, 50 lbs, 10 oz and above, 6 oz and above

Retail Packs Available (lbs):

	4	5	8	10	15	20	25	50	100	Bulk
Paper								x		
Poly	x	x	x	x	x	x				
Mesh		x	x	x						
Burlap								x		

Brands:

Aberdeen  
 Allied Growers  
 Pleasant Valley  
 Red Baron

Varieties:

Russet Burbank  
 Russet Norrikotah

**Mailing Address** 1210 Pier View Drive | Idaho Falls, ID 83402

**Shipping Facility** 1210 Pier View Drive | Idaho Falls, ID 83402

**Tel** (208) 524-4700 | **Fax** (208) 524-2420

**Contacts** Mel Davenport, COO, [mdavenport@potandon.com](mailto:mdavenport@potandon.com), (208) 557-5109  
 Steve Ottum, COO, [sottum@potandon.com](mailto:sottum@potandon.com), (208) 557-5103  
 Dick Thomas, Senior VP of Sales, [dthomas@potandon.com](mailto:dthomas@potandon.com), (208) 557-5150  
 Steve Elfering, VP of Operations, [selfering@potandon.com](mailto:selfering@potandon.com), (208) 557-5107  
 Ralph Schwartz, VP of Sales & Category Management, [rschwartz@potandon.com](mailto:rschwartz@potandon.com), (208) 557-5118  
 JP Surenus, Director of Variety Sales, [jsurenus@potandon.com](mailto:jsurenus@potandon.com), (208) 557-5165  
 Joey Dutton, Key Accounts Sales Manager, [jdutton@potandon.com](mailto:jdutton@potandon.com), (208) 557-5147  
 Stephanie Bench, Director of Foodservice Sales, [sbench@potandon.com](mailto:sbench@potandon.com), (208) 557-5156  
 Blaine Heiner, Wholesale Sales Manager, [bheiner@potandon.com](mailto:bheiner@potandon.com), (208) 557-5199  
 Kathy Rankin, Retail Sales Manager, [krankin@potandon.com](mailto:krankin@potandon.com), (208) 557-5136

This company is an organic potato supplier

This company is an exporter

Operating Season: Year-round

Transportation: Rail and Motor Freight

**Foodservice Packs Available:**

**No. 1 Carton Count Sizes:**

40 - 120, 10 oz Bakers, Standards

**Other No. 1 Sizes:**

Bulk, 50 lb Cartons, All Sizes, RPC containers, DeFor containers

**Foodservice No. 2s:**

	6 oz min	10 oz and above	12 oz and above	Bulk
Carton	x	x	x	x
Paper	x	x	x	x
Burlap	x	x	x	

**Other No. 2 Sizes:**

6 oz and above, 10 oz and above, Burlap, Paper, Carton, Mesh, Bulk, Bulk Bins, Bulk Tote Bins, and Bags

**Retail Packs Available (lbs):**

	4	5	8	10	15	20	25	50	100	Bulk
Paper								x		x
Poly	x	x	x	x	x	x				x
Mesh	x	x	x	x	x	x		x		x
Burlap								x	x	x

**Retail Packs Also Available In:**

3 lb Poly, Bulk Tote Bins, and Bags

**Brands:**

Gold Emblem  
 Green Giant Fresh  
 Harvest Fresh  
 Klondike Brands  
 Potandon  
 SunFresh  
 Sunset  
 The Valley

**Varieties:**

Russet Burbank  
 Russet Norlota  
 Agata  
 Almera  
 Cecile  
 Chieftain  
 Chieftain Red  
 Dark Red Norland  
 In nate  
 Klondike Goldust®  
 Klondike Rose®  
 Melody  
 Norland  
 Pure Gold  
 Purple Majesty  
 Red La Soda

**COMPANIES MARKETED BY POTANDON PRODUCE, LLC**

<b>Shed 8</b>	<b>SunRiver of Idaho, Inc.</b> <b>Mailing Address</b> PO Box 399   Aberdeen, ID 83210 <b>Shipping Facility</b> 351 E Lincoln   Aberdeen, ID 83210 <b>Tel</b> (208) 397-4168   <b>Fax</b> (208) 397-3075 <b>Contact</b> Jeff Prescott, <i>Shipping Manager</i> , <a href="mailto:shipping@sunriverofidaho.com">shipping@sunriverofidaho.com</a>	<b>Brands:</b> Big Wheel MoonRiver SunRiver The Best
<b>Shed 13</b>	<b>Driscoll Potatoes, Inc.</b> <a href="http://www.driscollbros.com/potatoes">www.driscollbros.com/potatoes</a> <b>Mailing Address</b> PO Box 129   American Falls, ID 83211 <b>Shipping Facility</b> 120 Adams St   American Falls, ID 83211 <b>Tel</b> (208) 226-5233   <b>Fax</b> (208) 226-5029 <b>Contact</b> Kevin Warren, <i>Business Manager</i> , <a href="mailto:kevinwarren@driscollpotato.com">kevinwarren@driscollpotato.com</a>	<b>Brands:</b> Driscoll Green Giant Fresh SunFresh
<b>Shed 22</b>	<b>Liberty Gold Potato Company</b> <b>Mailing Address</b> PO Box 550   Blackfoot, ID 83221 <b>Shipping Facility</b> 415 West Collins Siding Road Blackfoot, ID 83221 <b>Tel</b> (208) 785-8679   <b>Fax</b> (208) 785-8928 <b>Contacts</b> David Jackson, <i>General Manager</i> , <a href="mailto:dave@ligpotato.com">dave@ligpotato.com</a> Mark Thompson, <i>Assistant Manager</i> , <a href="mailto:mark@ligpotato.com">mark@ligpotato.com</a>	<b>Brands:</b> Green Giant SunFresh
<b>Shed 24</b>	<b>Idaho Select, Inc.</b> <b>Mailing Address</b> PO Box 519   Aberdeen, ID 83210 <b>Shipping Facility</b> 75 East Fremont Ave   Aberdeen, ID 83210 <b>Tel</b> (208) 397-4110   <b>Fax</b> (208) 397-4494 <b>Contact</b> Ethan Crook, <i>General Manager</i> , <a href="mailto:ecrook.idaho@gmail.com">ecrook.idaho@gmail.com</a>	<b>Brands:</b> Ida-Select
<b>Shed 27</b>	<b>Idaho Sunfresh, LLC</b> <b>Mailing Address</b> PO Box 216   Rigby, ID 83442 <b>Shipping Facility</b> 150 N Railroad Ave   Rigby, ID 83442 <b>Tel</b> (208) 745-6641   <b>Fax</b> (208) 745-9264	
<b>Shed 28</b>	<b>Blaine Larsen Farms, Inc.</b> <a href="http://www.larsenfarms.com">www.larsenfarms.com</a> <b>Mailing Address</b> PO Box 188   Hamec, ID 83425 <b>Shipping Facility</b> 2379 East 2300 North   Hamec, ID 83425 <b>Tel</b> (208) 662-5501   <b>Fax</b> (208) 662-5568 <b>Contact</b> Mary Lusk	
<b>Shed 89</b>	<b>Gold Emblem Produce / Taylor &amp; Sons, Inc.</b> <b>Mailing Address</b> PO Box 51780   Idaho Falls, ID 83405 <b>Shipping Facility</b> 7891 South Yellowstone Hwy   Idaho Falls, ID 83402 <b>Tel</b> (208) 522-7770   <b>Fax</b> (208) 522-7470 <b>Contact</b> Mitch Johnson, <i>Financial Controller</i> , <a href="mailto:cfo@tandsons.com">cfo@tandsons.com</a>	<b>Brands:</b> Gold Emblem
<b>Shed 98</b>	<b>Walters Produce, Inc.</b> <b>Mailing Address</b> PO Box 177   Newdale, ID 83436 <b>Shipping Facility</b> 2737 East Highway 33   Newdale, ID 83436 <b>Tel</b> (208) 458-4105   <b>Fax</b> (208) 458-4106 <b>Contacts</b> Jeffrey Walters, <i>President</i> , <a href="mailto:jeffreyw@waltersproduce.net">jeffreyw@waltersproduce.net</a> Brett Johnson, <i>Operations Manager</i> , <a href="mailto:brettj@waltersproduce.net">brettj@waltersproduce.net</a>	<b>Brands:</b> Aristocrat Eagle Green Giant Jumbo Newdale SunFresh Sunspiced Tasty Tater

Much of the water supply for Idaho's potatoes comes from the South Fork of the Snake River and the surrounding mountains that feed it with snowmelt.



## R&G POTATO COMPANY, INC. [www.rgpotato.com](http://www.rgpotato.com)

<b>Mailing Address</b>	2662 Lakeview Rd   American Falls, ID 83211
<b>Shipping Facility</b>	2110 Elevator Loop   Pocatello, ID 83204
<b>Tel</b>	(208) 226-5069   <b>Fax</b> (208) 226-2692
<b>Email</b>	justin@rgpotato.com
<b>Contacts</b>	Justin Reynolds, CFO, justin@rgpotato.com
<b>Operating Season</b>	July - May
<b>Transportation</b>	Rail and Motor Freight
<b>Varieties</b>	All chipping potatoes

## RIGBY PRODUCE, INC. [www.rigbyproduce.com](http://www.rigbyproduce.com)

<b>Mailing Address</b>	PO Box 628   Rigby, ID 83442
<b>Shipping Facility</b>	396 N Yellowstone Highway   Rigby, ID 83442
<b>Tel</b>	(208) 745-6626   <b>Fax</b> (208) 745-9278
<b>Contacts</b>	Dale Mickelsen, <i>President</i> , dale@rigbyproduce.com Bryan Mickelsen, <i>General Manager</i> , mick@rigbyproduce.com Scott Mickelsen, <i>Business Manager</i> , smickelsen@rigbyproduce.com Nick Fullmer, <i>Sales Representative</i> , nick@rigbyproduce.com Steve Wasden, <i>Sales Representative</i> , swasden@rigbyproduce.com

**Operating Season:** Year-round

**Transportation:** Rail and Motor Freight

**Shed ID:** 10

### Foodservice Packs Available:

#### No. 1 Carton Count Sizes:

40 - 120, 10 oz Bakers, Standards

#### Other No. 1 Sizes

50 lb Cartons, 100 lbs, 10 oz and above,  
12 oz and above

#### Foodservice No. 2s:

	6 oz min	10 oz and above	12 oz and above	Bulk
Carton	x	x	x	x
Paper	x	x	x	x
Burlap	x	x	x	x

#### Other No. 2 Sizes:

Mesh

#### Retail Packs Available (lbs):

	4	5	8	10	15	20	25	50	100	Bulk
Paper								x		
Poly	x	x	x	x	x	x				
Mesh		x	x							
Burlap								x	x	

#### Retail Packs Also Available In:

3 lb Poly

### Brands:

PPI  
Rigby Produce  
Royal Crest

### Varieties:

Russet Burbank  
Russet Norkotah

Potato fields as far as the eye can see  
from the Rexburg bench. Did you know that  
approximately 320,000 acres of potatoes are  
harvested in Idaho each year?



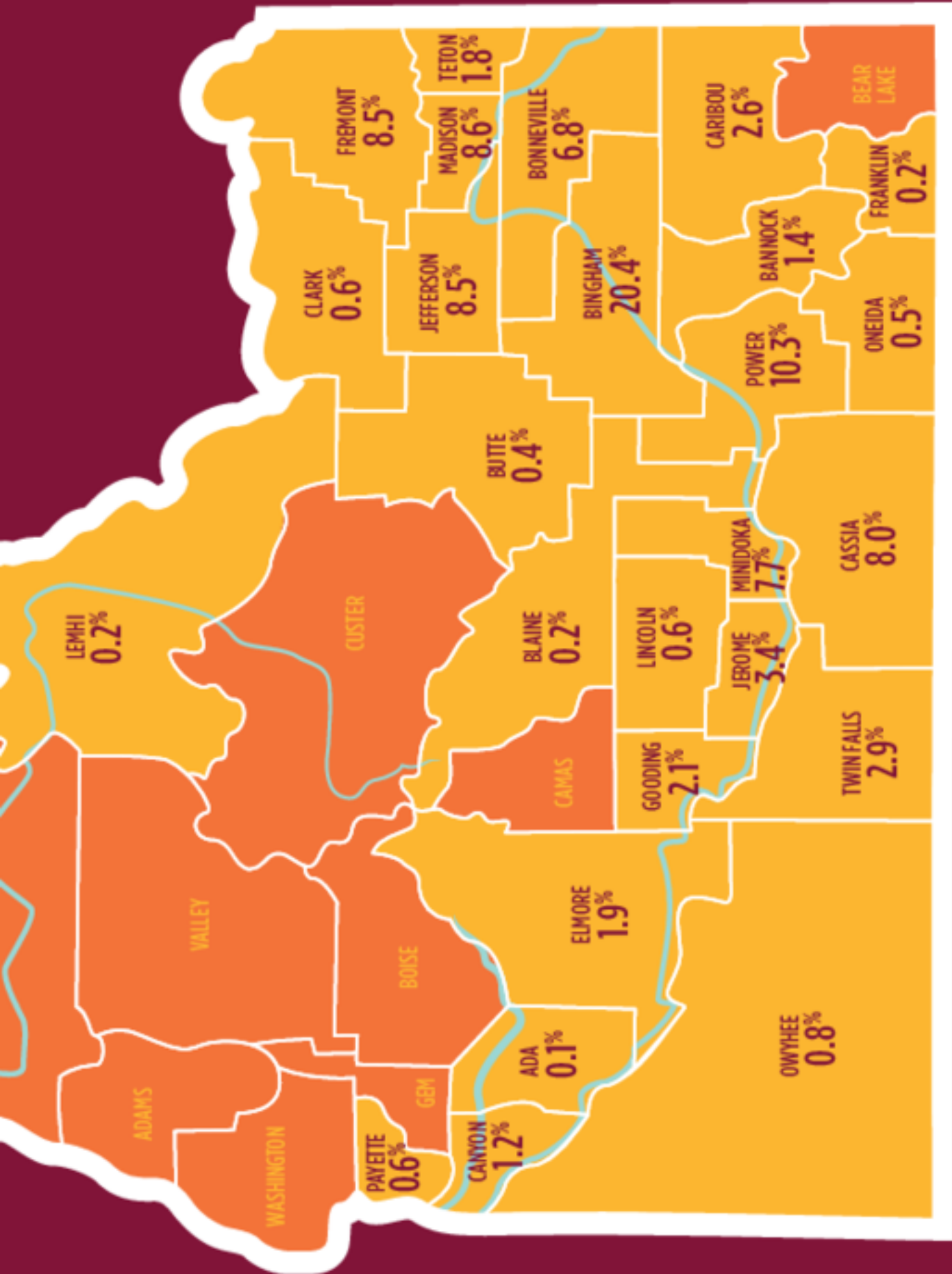


# MAJOR IDAHO<sup>®</sup> POTATO GROWING AREAS —BY COUNTY—

In any given year, Idaho<sup>®</sup> potato growers harvest between 300,000 and 320,000 acres, averaging 13.5 billion pounds of Idaho<sup>®</sup> potatoes per year.









At more than 56,000 acres, the American Falls Reservoir is the largest on the Snake River.



## SOUTHWIND FARMS, INC. [www.southwindpotatoes.com](http://www.southwindpotatoes.com)

**Mailing Address** PO Box 606 | Heyburn, ID 83336

**Shipping Facility** 450 21st St | Heyburn, ID 83336

**Tel** (208) 436-8164 | **Fax** (208) 436-8039

**Email** [rob@southwindpotatoes.com](mailto:rob@southwindpotatoes.com)

**Contacts** Robert Tominaga, *President*, [rob@southwindpotatoes.com](mailto:rob@southwindpotatoes.com)  
 Rodney Lake, *Secretary/Treasurer: Agronomist, Market Development*, [rod@southwindpotatoes.com](mailto:rod@southwindpotatoes.com)  
 Jerry Tominaga, *VP, Raw Production*, [jerry@southwindpotatoes.com](mailto:jerry@southwindpotatoes.com)  
 Scott Gorczyca, *Assistant General Manager*, [scott@southwindpotatoes.com](mailto:scott@southwindpotatoes.com), 208 436 8164

This company is an exporter

**Operating Season:** Year-round

**Transportation:** Motor Freight

### Foodservice Packs Available:

#### Other No. 1 Sizes:

10 lb, 20 lb, or 50 lb Cartons

#### Retail Packs Available In:

24-oz Zip Lock Retail Poly Bag

### Brands:

Gourmet Select  
 Southwind Farms  
 Gourmet

### Varieties:

Cascade  
 Mimi  
 Purple Fiesta  
 Fingerling  
 Red Thumb  
 Fingerling  
 Russian Banana

## SUN VALLEY POTATO GROWERS, INC. [www.sunvalleypotatoes.com](http://www.sunvalleypotatoes.com)

**Mailing Address** PO Box 59 | Pau, ID 83347

**Shipping Facility** 380W 75 S | Rupert, ID 83350

**Tel** (208) 438-2605 | **Fax** (208) 438-8018

**Email** [brian@sunvalleypotatoes.com](mailto:brian@sunvalleypotatoes.com)

**Contacts** Brian Jones, *President*  
 Dave Phillips, *Director of Foodservice Sales*  
 Ty Erling, *Sales*, [ty@sunvalleypotatoes.com](mailto:ty@sunvalleypotatoes.com)  
 Dave Hagar, *Sales*  
 Terrance Lindauer, *Sales*, [terrance@sunvalleypotatoes.com](mailto:terrance@sunvalleypotatoes.com)  
 Abraham Pelayo, *Sales*  
 Sue Rodriguez, *Sales*  
 Wendy Ceja, *CSR*, [wendy@sunvalleypotatoes.com](mailto:wendy@sunvalleypotatoes.com)  
 Karen Werth, *CSR*  
 Chris Hall, *Transportation*

**Marketed by** RPE, Inc.

This company is an exporter

**Operating Season:** Year-round

**Transportation:** Rail and Motor Freight

**Shed ID:** 48

### Foodservice Packs Available:

#### No. 1 Carton Count Sizes:

40 - 120, 10 oz Bakers, Standards

### Foodservice No. 2s:

	6 oz min	10 oz and above	12 oz and above	Bulk
Carton	x	x	x	
Paper	x	x	x	
Burip				

### Retail Packs Available (lbs):

	4	5	8	10	15	20	25	50	100	Bulk
Paper								x		
Poly	x	x	x	x	x					
Mesh	x		x					x		
Burip										

### Brands:

Greener Valley  
 Old Oak Farms  
 Primos  
 Sun Valley  
 Two Good

### Varieties:

Russet Burbank  
 Russet Norkotah

## SUN-GLO OF IDAHO, INC. [www.sungloidaho.com](http://www.sungloidaho.com)

**Mailing Address** PO Box 300 | Sugar City, ID 83448  
**Shipping Facility** 378 S 7th West | Sugar City, ID 83448  
**Tel** (208) 356-7346 | **Fax** (208) 356-7351  
**Email** [bruce@sunglo-idaho.com](mailto:bruce@sunglo-idaho.com)  
**Contacts** Jill Cox, [jill@sunglo-idaho.com](mailto:jill@sunglo-idaho.com)  
 Weston Crapo, Sales, [weston@sunglo-idaho.com](mailto:weston@sunglo-idaho.com)

This company is an exporter

**Operating Season:** Year-round

**Transportation:** Rail and Motor Freight

**Shed ID:** 17

**Foodservice Packs Available:**

**No. 1 Carton Count Sizes:**

40 - 120, 10 oz Bakers

**Retail Packs Available (lbs):**

	4	5	8	10	15	20	25	50	100	Bulk
Paper								x		
Poly	x	x	x	x	x	x				
Mesh		x	x	x				x		
Burlap								x		

**Brands:**

A Cut Above  
 Ace  
 Martha's Garden  
 Side Delights  
 Sun Supreme

**Varieties:**

Russet Burbank  
 Russet Norkotah

### COMPANY MARKETED BY SUN-GLO OF IDAHO, INC.

**Shed 87 Webster Potato Company** [www.websterpotato.com](http://www.websterpotato.com)  
**Mailing Address** PO Box 448 | Rigby, ID 83442  
**Shipping Facility** 1825 Railroad | Rigby, ID 83442  
**Tel** (208) 745-6825 | **Fax** (208) 745-6939  
**Email** [jwebster@websterpotato.com](mailto:jwebster@websterpotato.com)  
**Contact** Weston Crapo, Sales, (208) 356-5510

**Brands:**

Celebrity  
 Mighty Fine

Idaho's rich volcanic soil, warm days, cool nights, and clean water from the mountains gives Idaho's potatoes their one-of-a-kind texture, taste, and dependable performance.

## WADA FARMS POTATOES [www.wadafarms.com](http://www.wadafarms.com)

**Mailing Address** 2155 Providence Way | Idaho Falls, ID 83404

**Shipping Facility** 337 S 1400 W | Pingree, ID 83262

**Tel** (208) 542-2898 | **Fax** (208) 542-2893

**Email** [info@wadafarms.com](mailto:info@wadafarms.com)

**Contacts** Bryan Wada, CEO, [bryanw@wadafarms.com](mailto:bryanw@wadafarms.com)  
 Kevin Stanger, President, [kevins@wadafarms.com](mailto:kevins@wadafarms.com)  
 Joe Esta, Vice President, [joe@wadafarms.com](mailto:joe@wadafarms.com)  
 Ben Josephson, Director of Sales, [benj@wadafarms.com](mailto:benj@wadafarms.com)  
 Tate Brooks, Sales, [tateb@wadafarms.com](mailto:tateb@wadafarms.com)  
 Dave Barton, Sales, [daveb@wadafarms.com](mailto:daveb@wadafarms.com)  
 Dominic Carnazzo, Sales, [dominic@wadafarms.com](mailto:dominic@wadafarms.com)  
 Eric Beck, Sales, [ericb@wadafarms.com](mailto:ericb@wadafarms.com)  
 Manny Carvajal, Sales, [manny@wadafarms.com](mailto:manny@wadafarms.com)  
 Taylor Knott, Sales Assistant, [taylor@wadafarms.com](mailto:taylor@wadafarms.com)  
 Cindy Morgan, Packaging Coordinator, [cindy@wadafarms.com](mailto:cindy@wadafarms.com)  
 Kirk Yellowhair, Production Manager, [kirk@wadafarms.com](mailto:kirk@wadafarms.com)  
 Eric Johnson, Director of Logistics, [eric@wadafarms.com](mailto:eric@wadafarms.com)  
 Terry Hansen, Transportation, [terry@wadafarms.com](mailto:terry@wadafarms.com)  
 Kevin King, Transportation, [kevink@wadafarms.com](mailto:kevink@wadafarms.com)  
 Eden Adams, Transportation, [eden@wadafarms.com](mailto:eden@wadafarms.com)

This company is an organic potato supplier

This company is an exporter

Operating Season: Year-round

Transportation: Rail and Motor Freight

Shed ID: 34

### Foodservice Packs Available:

#### No. 1 Carton Count Sizes:

40 - 120, 10 oz Bakers, Standards

#### No. 2 Packs:

	6 oz min	10 oz and above	12 oz and above	Bulk
Carton	x	x	x	x
Paper	x	x	x	x
Burlap	x	x	x	x

#### Retail Packs Available (lbs):

	4	5	8	10	15	20	25	50	100	Bulk
Paper		x	x	x	x	x		x	x	x
Poly	x	x	x	x	x	x		x	x	x
Mesh		x	x	x	x	x		x	x	x
Burlap		x		x				x	x	x

### Brands:

Big Joe's  
 Blackfoot Fresh  
 Dole  
 Easy-Bakers  
 Easy-Grillers  
 Microwave in Bag  
 Restaurant  
 Quality  
 Gourmet  
 Fingerlings  
 Sharp  
 Smalls  
 Tailgate Taters  
 Tater Made  
 Wada Farms

### Varieties:

Russet Burbank  
 Russet Noriko tah  
 Bintje  
 Chieftain  
 Ciklamen  
 Classic Russet  
 Dakota Crisp  
 French Fingerling  
 Modoc  
 Norland  
 Purple Peruvian  
 Ranger Russet  
 Red Thumb  
 Fingerling  
 Ruby Crescent  
 Russian Banana  
 Western Russet  
 Yellow Star  
 Yukon Gold

## COMPANIES MARKETED BY WADA MARKETING GROUP

<b>Shed 26</b>	<b>High Country Potato</b> Mailing Address PO Box 817   Rexburg, ID 83440 Shipping Facility 900 University Blvd   Rexburg, ID 83440 Tel (208) 356-4402   Fax (208) 356-9935 Contact Bob Conger, bob@idahopotato.cc	<b>Brands:</b> Dole Oven King Valu King Wada Farms
<b>Shed 50</b>	<b>Magic Valley Produce, Inc.</b> Mailing Address PO Box 730   Paul, ID 83347 Shipping Facility 322 N Main St   Paul, ID 83347 Tel (208) 438-2995   Fax (208) 438-2559 Contact Dean Gibson, Sales Manager, dean@magicvalleyproduce.com	<b>Brands:</b> De-Lish Genuine Magic M.V.P. Nifty 50 Sawtooth
<b>Shed 70</b>	<b>Ball Brothers Produce</b> Mailing Address PO Box 69   Lewisville, ID 83431 Shipping Facility 507 N 3470 E   Lewisville, ID 83431 Tel (208) 754-4651   Fax (208) 754-8530 Email ballbrothers@ida.net Contact Carl Ball	<b>Brands:</b> Cheeburger Cross Valley Dole Mark and Bill Mrs. Gerry's Peak Sharp Wada Farms
<b>Shed 101</b>	<b>Moody Creek Produce, Inc.</b> Mailing Address PO Box 329   Sugar City, ID 83448 Shipping Facility (208) 356-9447   Fax (208) 356-4373 Email bill@onewest.net	



In grower lingo these rows are "almost closed," meaning the plants are about to touch. Farmers believe that if the rows are "closed" by the 4th of July that the crop is on schedule.

# WALKER PRODUCE, INC.

**Mailing Address** 1070 Riverwalk Dr, Suite 200 | Idaho Falls, ID 83402

**Shipping Facility** 638 N 3500 E | Menan, ID 83434

**Tel** (208) 522-3610 | **Fax** (208) 522-0099

**Contacts** Heath Gordon, *Sales Manager*, heath@walkerproduce.net  
Sheena Cruz, *Sales Support and Transportation*, sheena@walkerproduce.net

**Operating Season:** Year-round

**Transportation:** Rail and Motor Freight

**Shed ID:** 38, 96

**Foodservice Packs Available:**

**No. 1 Carton Count Sizes:**

40 - 120, 10 oz Bakers, Standards

**Other No. 1 Sizes:**

12 oz Bakers, 6 oz Bakers, 35 count

**Foodservice No. 2s:**

	6 oz min	10 oz and above	12 oz and above	Bulk
Carton	x	x		x
Paper	x	x		x
Burlap	x	x		

**Retail Packs Available (lbs):**

	4	5	8	10	15	20	25	50	100	Bulk
Paper								x		
Poly	x	x	x	x	x					
Mesh	x		x							
Burlap								x	x	

**Brands:**

Big W  
Light N Fluffy  
Nature's Light—  
Probiotic  
Tasti  
Top Notch  
Von's  
Von's Taters  
Western Style

**Varieties:**

Russet Burbank  
Russet Norkotah





# WILCOX, FLOYD & SONS, INC. [www.wilcoxfresh.com](http://www.wilcoxfresh.com)

**Mailing Address** 1110 Golden Beauty Drive | Rexburg, ID 83440

**Shipping Facility** 1110 Golden Beauty Drive | Rexburg, ID 83440

**Tel** (208) 356-6668 | **Fax** (208) 356-6669

**Email** [wilcox@wilcoxfresh.com](mailto:wilcox@wilcoxfresh.com)

**Contacts** Lynn Wilcox, *President/CEO*, [lynn@wilcoxfresh.com](mailto:lynn@wilcoxfresh.com), (208) 227-5113  
 Derek Peterson, *VP of Sales & Marketing*, [derek@wilcoxfresh.com](mailto:derek@wilcoxfresh.com), (208) 227-5155  
 Nicole Rumsey, *Director of Foodservice*, [nicole@wilcoxfresh.com](mailto:nicole@wilcoxfresh.com), (208) 227-5135  
 Arturo Rodriguez, *Export Manager*, [art@wilcoxfresh.com](mailto:art@wilcoxfresh.com), (208) 227-5126  
 Dave Sherman, *Category Manager*, [david@wilcoxfresh.com](mailto:david@wilcoxfresh.com), (208) 227-5141  
 Gary Treasure, *Category Manager*, [gary@wilcoxfresh.com](mailto:gary@wilcoxfresh.com), (208) 227-5149  
 Cameron Kerbs, *Transportation Manager*, [cameron@wilcoxfresh.com](mailto:cameron@wilcoxfresh.com), (208) 227-5122

This company is an exporter

**Operating Season:** Year-round

**Transportation:** Rail and Motor Freight

**Shed ID:** 110

**Foodservice Packs Available:**

**No. 1 Carton Count Sizes:**

40 - 120, 10 oz Bakers, Standards

### Foodservice No. 2s:

	6 oz min	10 oz and above	12 oz and above	Bulk
Carton	x	x	x	
Paper	x	x		
Burip				

### Retail Packs Available (lbs):

	4	5	8	10	15	20	25	50	100	Bulk
Paper								x		
Poly	x	x	x	x	x	x				x
Mesh		x	x							x
Burip								x		

### Brands:

Easy! Creations  
 Mother Earth  
 Old Faithful Fries  
 Penny Pincher  
 Potato Jazz  
 Tastewell  
 Wilcox

### Varieties:

Russet Burbank  
 Russet Norkotah  
 Chieftain Red  
 Dark Red Norland  
 French Fingerling  
 Kennebec  
 Ludmilla  
 Norland  
 Purple Peruvian  
 Ruby Crescent  
 Russian Banana  
 Yellow Gold  
 Yukon Gold

Eastern Idaho only gets approximately 12 inches of precipitation a year, making supplementary irrigation an important part of growing potatoes.

Harvest time is exciting but can also be a weather waiting game. Too hot? Too cold? Just right!







# Idaho® Potato Brokers

The sales of fresh Idaho® potatoes can be arranged through many channels to reach the end user. This year we want to acknowledge the ongoing work that Idaho-based potato brokers do in moving a substantial amount of the Idaho® potato crop to their customer base in retail and foodservice.

## 20/20 PRODUCE SALES, INC. [www.2020produce.com](http://www.2020produce.com)

**Mailing Address** 480 22nd Street | Heyburn, ID 83336

**Tel** (208) 677-2020 | **Fax** (208) 438-8966

**Contact** Mark Williams, *President*, [mark@2020produce.com](mailto:mark@2020produce.com)  
Colin Gibson, *VP Sales*, [colin@2020produce.com](mailto:colin@2020produce.com)  
Amy Peterson, *Sales*, [amy@2020produce.com](mailto:amy@2020produce.com)

**Operating Season:** Year-round

**Transportation:** Rail and Motor Freight

### Foodservice Packs Available:

#### No. 1 Carton Count Sizes:

40 - 120

#### Foodservice No. 2s:

	6 oz min	10 oz and above	12 oz and above	Bulk
Carton	x	x		
Paper	x	x		
Burlap	x	x		

#### Retail Packs Available (lbs):

	4	5	8	10	15	20	25	50	100	Bulk
Paper								x		
Poly										
Mesh								x		
Burlap								x		

### Varieties:

Russet Burbank  
Russet Norkotah  
Chieftain Red  
Dakota Crisp  
Dark Red Norland  
Pure Gold  
Purple Peruvian  
Red La Soda  
Russian Banana  
Yukon Gold



Having done its job, about three weeks before harvest the foliage dies back and the skin on the potatoes begins to set, preparing them for the digging process.

## GARNAND MARKETING, LLC [www.garnand.com](http://www.garnand.com)

**Mailing Address** 129 Eastland Drive | Twin Falls, ID 83301

**Tel** (208) 734-5744 | (208) 731-5744 | **Fax** (208) 734-6951

**Email** [gammkt@garnand.com](mailto:gammkt@garnand.com)

**Contacts** Gary Garnand, *Managing Partner*, [gammkt@garnand.com](mailto:gammkt@garnand.com), (208) 734-5744  
 Clay Gustavson, *Sales*, [clay@garnand.com](mailto:clay@garnand.com), (208) 680-6939  
 Kevin Adam, *Partner*, [KPA@garnand.com](mailto:KPA@garnand.com), (208) 734-6095

**Operating Season:** Year-round

**Transportation:** Rail and Motor Freight

**Foodservice Packs Available:**

**No. 1 Carton Count Sizes:**

40 - 120, 10 oz Bakers, Standards

**Foodservice No. 2s:**

	6 oz min	10 oz and above	12 oz and above	Bulk
Carton	x	x	x	
Paper	x			
Burlap				

**Other No. 2 Sizes:**

50# Mesh

**Retail Packs Available (lbs):**

	4	5	8	10	15	20	25	50	100	Bulk
Paper								x		
Poly		x		x	x					
Mesh		x		x						
Burlap										

**Retail Packs Also Available In:**

50# sized Cartons

**Varieties:**

Russet Burbank  
 Russet Norkotah  
 Dakota Crisp

**Mailing Address** 477 Shoup Ave, Suite 207 | Idaho Falls, ID 83402

**Tel** (208) 522-2365 | **Fax** (208) 522-2608

**Contacts** Christie Sommers, *VP of Account Services*, [csommers@kingstonfresh.com](mailto:csommers@kingstonfresh.com)  
 Kristy Sommers, *Key Accounts Manager*, [ksommers@kingstonfresh.com](mailto:ksommers@kingstonfresh.com)  
 Toye Cawley, *Key Accounts Manager*, [tcawley@kingstonfresh.com](mailto:tcawley@kingstonfresh.com)

This company is an exporter

**Operating Season:** Year-round

**Transportation:** Rail and Motor Freight

**Foodservice Packs Available:**

**No. 1 Carton Count Sizes:**

40 - 120, 10 oz Bakers

**Foodservice No. 2s:**

	6 oz min	10 oz and above	12 oz and above	Bulk
Carton	x	x		x
Paper	x	x		x
Burlap				

**Brands:**

Awesome

Kingston

Kingston Fryer

**Varieties:**

Russet Burbank

Russet Norkotah

Ranger Russet

**Retail Packs Available (lbs):**

	4	5	8	10	15	20	25	50	100	Bulk
Paper								x		
Poly	x		x	x	x					
Mesh	x		x							
Burlap								x		



Travis used the DJI Phantom 4 Pro Quadcopter Drone to capture the great photos in this year's directory.



Harvest is the culmination, and reward, for a season of hard work and dedication.







## FRESH IDAHO® POTATO BRAND LISTING

BRAND	SHIPPER
A Cut Above	Sun-Glo of Idaho, Inc.
Aberdeen	Pleasant Valley Potato, Inc.
Ace	Sun-Glo of Idaho, Inc.
Allied Growers	Pleasant Valley Potato, Inc.
Angus	Nonpareil Farms — Idaho Potato Packers
Aristocrat	Walkers Produce, Inc.
Arrowhead	Arrowhead Potato Company
Betty Crocker	Nonpareil Farms — Idaho Potato Packers
Big Joe's	Wada Farms Potatoes
Big W	Walker Produce, Inc.
Big Wheel	SunRiver of Idaho, Inc.
Blackfoot Fresh	Wada Farms Potatoes
Broadway	Nonpareil Farms — Idaho Potato Packers
Buffalo	Arrowhead Potato Company
Celebrity	Webster Potato Company
Cheeburger	Ball Brothers Produce
Chief	Arrowhead Potato Company
Circle T	Mart Produce Corporation
Circle Valley	Circle Valley Produce, LLC
COOK-RITE	GPOD of Idaho
Cross Valley	Ball Brothers Produce
CV	Circle Valley Produce, LLC
De-Lish	Magic Valley Produce, Inc.
Diced Blends	Eagle Eye Produce
Dole	Wada Farms Potatoes
Dole	High Country Potato
Dole	Ball Brothers Produce
Driscoll	Driscoll Potatoes, Inc.
Eagle	Walkers Produce, Inc.
Easy-Bakers	Wada Farms Potatoes
Easy-Grillers	Wada Farms Potatoes
Easy! Creations	Wilcox, Floyd & Sons, Inc.
Elite	Idaho Fresh Produce, Inc.
Farm Fresh	Bench Mark Potato Co.
Farm Select	Eagle Eye Produce
Fresh Harvest	Eagle Eye Produce
GENESIS ORGANICS	Genesis Organics, LLC
Genuine Magic	Magic Valley Produce, Inc.
Gold Emblem	Gold Emblem Produce/Taylor & Sons, Inc.
Gold Emblem	Potandon Produce, LLC
Gourmet Select	Southwind Farms, Inc.
GPOD	GPOD of Idaho
Green Giant	Liberty Gold Potato Company

BRAND	SHIPPER
Green Giant	Walkers Produce, Inc.
Green Giant Fresh	Driscoll Potatoes, Inc.
Green Giant Fresh	Potandon Produce, LLC
Greener Valley	Sun Valley Potato Growers, Inc.
Harvest Fresh	Potandon Produce, LLC
Harvest Select	Eagle Eye Produce
Harvest Time	Eagle Eye Produce
Ida-Select	Idaho Select, Inc.
Idaho Potato Packers (IPP)	Nonpareil Farms — Idaho Potato Packers
Jumbo	Walkers Produce, Inc.
Junior	GPOD of Idaho
Klondike Brands	Potandon Produce, LLC
Light N Fluffy	Walker Produce, Inc.
M.V.P.	Magic Valley Produce, Inc.
Magic	Nonpareil Farms — Idaho Potato Packers
Mark and Bill	Ball Brothers Produce
Mart Brand	Mart Produce Corporation
Martha's Garden	Sun-Glo of Idaho, Inc.
Microwave in Bag	Wada Farms Potatoes
Mighty Fine	Webster Potato Company
Moon River	SunRiver of Idaho, Inc.
Mother Earth	Wilcox, Floyd & Sons, Inc.
Mrs. Gerry's	Ball Brothers Produce
Nature's Light — Probiotic	Walker Produce, Inc.
Newdale	Walkers Produce, Inc.
Nifty 50	Magic Valley Produce, Inc.
Nonpareil	Nonpareil Farms — Idaho Potato Packers
Old Faithful Files	Wilcox, Floyd & Sons, Inc.
Old Oak Farms	Sun Valley Potato Growers, Inc.
Organic Select	Eagle Eye Produce
Oven King	High Country Potato
Peak	Ball Brothers Produce
Penny Pincher	Wilcox, Floyd & Sons, Inc.
Pleasant Valley	Pleasant Valley Potato, Inc.
Potandon	Potandon Produce, LLC
Potato Jazz	Wilcox, Floyd & Sons, Inc.
PPI	Rigby Produce, Inc.
Pride of the Valley	Bench Mark Potato Co.
Primos	Sun Valley Potato Growers, Inc.

BRAND	SHIPPER
Prize Pack	Nonpareil Farms — Idaho Potato Packers
Red Baron	Pleasant Valley Potato, Inc.
Restaurant Quality Gourmet Fingerlings	Wada Farms Potatoes
Rigby Produce	Rigby Produce, Inc.
Royal Crest	Rigby Produce, Inc.
Sawtooth	Magic Valley Produce, Inc.
Sharp	Wada Farms Potatoes
Sharp	Ball Brothers Produce
Side Delights	Sun-Glo of Idaho, Inc.
Small's	Wada Farms Potatoes
Southwind Farms Gourmet	Southwind Farms, Inc.
SunFresh	Driscoll Potatoes, Inc.
SunFresh	Liberty Gold Potato Company
SunFresh	Potandon Produce, LLC
SunFresh	Walkers Produce, Inc.
Sun Supreme	Sun-Glo of Idaho, Inc.
Sun Valley	Sun Valley Potato Growers, Inc.
SunRiver	SunRiver of Idaho, Inc.
Sunset	Potandon Produce, LLC
Sunspiced	Walkers Produce, Inc.
Sutton Brothers	Bench Mark Potato Co.
Tailgate Taters	Wada Farms Potatoes
Taswell	Wilcox, Floyd & Sons, Inc.
Tas II	Walker Produce, Inc.
Tasty Tater	Walkers Produce, Inc.
Tater Made	Wada Farms Potatoes
Teton Tater	Mart Produce Corporation
The Best	SunRiver of Idaho, Inc.
The Great Potato	GPOD of Idaho
The Valley	Potandon Produce, LLC
Top Notch	Walker Produce, Inc.
Town & Country	GPOD of Idaho
Two Good	Sun Valley Potato Growers, Inc.
Valu King	High Country Potato
Value	Idaho Fresh Produce, Inc.
Von's	Walker Produce, Inc.
Von's Taters	Walker Produce, Inc.
Wada Farms	Wada Farms Potatoes
Wada Farms	High Country Potato
Wada Farms	Ball Brothers Produce
Western Style	Walker Produce, Inc.
Wilcox	Wilcox, Floyd & Sons, Inc.

## FRESH IDAHO® POTATO EXPORTERS

The following companies export fresh potatoes in a variety of types.

Arrowhead Potato Company  
Ball Brothers Produce  
Bench Mark Potato Co.  
Driscoll Potatoes, Inc.  
Eagle Eye Produce  
GPOD of Idaho  
Idaho Fresh Produce, Inc.  
Idaho Sunfresh, LLC  
Kingston Fresh  
Magic Valley Produce, Inc.  
Mart Produce Corporation  
Nonpareil Farms—  
Idaho Potato Packers  
Pleasant Valley Potato, Inc.  
Potandon Produce, LLC  
Rocky Mountain Produce  
Southwind Farms, Inc.  
Sun Valley Potato Growers, Inc.  
Sun-Glo of Idaho, Inc.  
Wada Farms Potatoes  
Wilcox, Floyd & Sons, Inc.

## PROCESSED IDAHO® POTATO EXPORTERS

The following companies export processed potatoes in a variety of types.

Basic American Foods  
Idaho Pacific Corporation  
Idaho Supreme Potatoes, Inc.  
Idahoan Foods, LLC  
Lamb Weston  
McCain Foods USA, Inc.  
Potato Products of Idaho  
Rite Stuff Foods, Inc.  
Simplot, J.R. Company

## ORGANIC IDAHO® POTATO SUPPLIERS

The following suppliers comply with organic standards set by national governments and international organizations.

Eagle Eye Produce  
Genesis Organics, LLC  
Nonpareil Farms—  
Idaho Potato Packers  
Potandon Produce, LLC  
Wada Farms Potatoes

## JULIAN DATES

Julian dates are used by shippers to determine exactly when the potatoes were packed. This date is stenciled on the cartons at the plant. The Julian date calendar below may be of assistance in determining in which month a carton or bag of potatoes was packed.

JULIAN DATES AT A GLANCE	
January	1–31
February	32–59
March	60–90
April	91–120
May	121–151
June	152–181

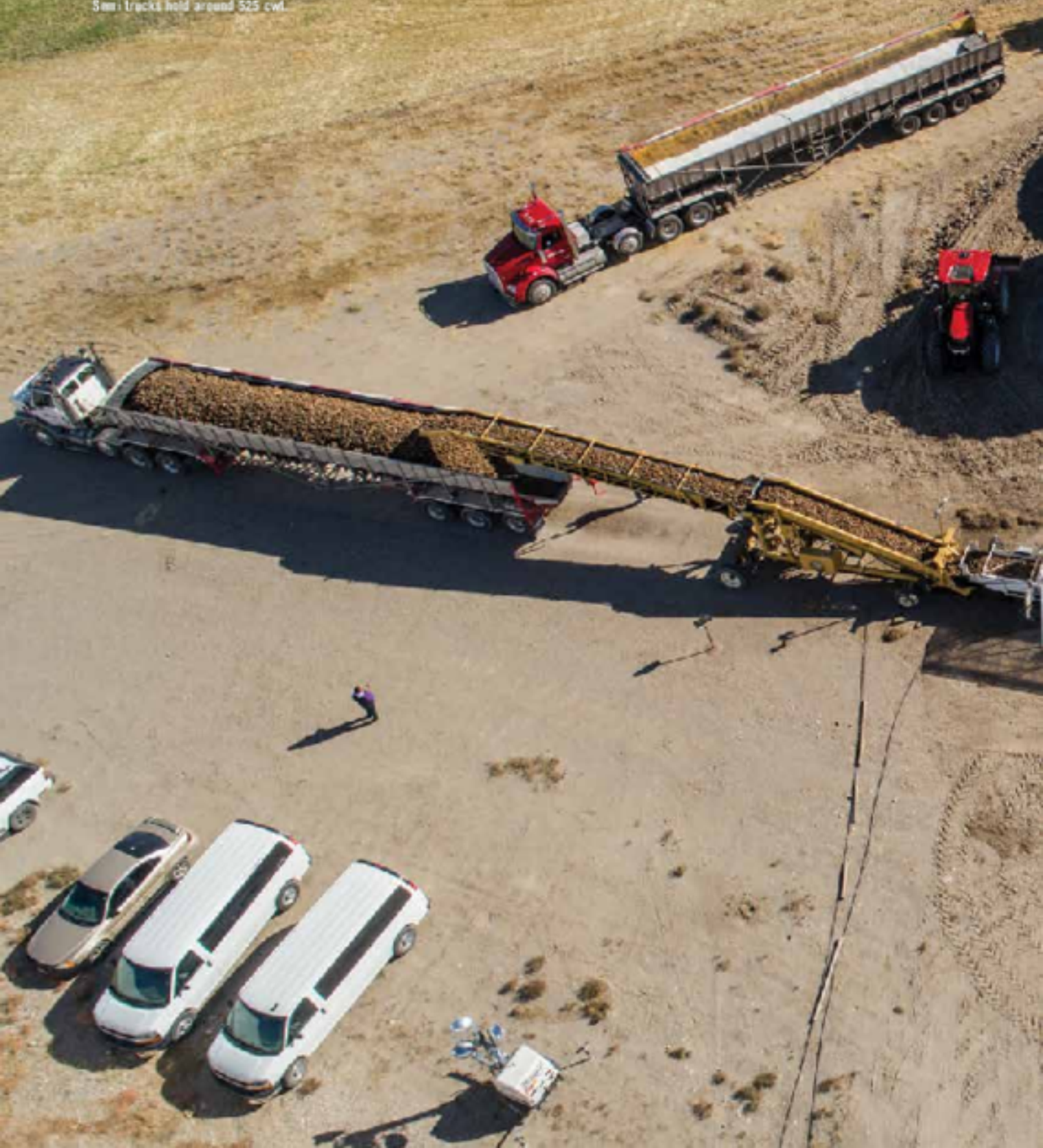
JULIAN DATES AT A GLANCE	
July	182–212
August	213–243
September	244–273
October	274–304
November	305–334
December	335–365

Below is a Julian date converter to calculate the specific day/month pack date. You may also enter this link into your web browser:  
[fs.fed.us/fire/partners/fepj/julian-calendar.pdf](https://fs.fed.us/fire/partners/fepj/julian-calendar.pdf)

DAY	JAN	FEB	MAR	APR	MAY	JUN	JUL	AUG	SEP	OCT	NOV	DEC	DAY
1	001	032	060	091	121	152	182	213	244	274	305	335	1
2	002	033	061	092	122	153	183	214	245	275	306	336	2
3	003	034	062	093	123	154	184	215	246	276	307	337	3
4	004	035	063	094	124	155	185	216	247	277	308	338	4
5	005	036	064	095	125	156	186	217	248	278	309	339	5
6	006	037	065	096	126	157	187	218	249	279	310	340	6
7	007	038	066	097	127	158	188	219	250	280	311	341	7
8	008	039	067	098	128	159	189	220	251	281	312	342	8
9	009	040	068	099	129	160	190	221	252	282	313	343	9
10	010	041	069	100	130	161	191	222	253	283	314	344	10
11	011	042	070	101	131	162	192	223	254	284	315	345	11
12	012	043	071	102	132	163	193	224	255	285	316	346	12
13	013	044	072	103	133	164	194	225	256	286	317	347	13
14	014	045	073	104	134	165	195	226	257	287	318	348	14
15	015	046	074	105	135	166	196	227	258	288	319	349	15
16	016	047	075	106	136	167	197	228	259	289	320	350	16
17	017	048	076	107	137	168	198	229	260	290	321	351	17
18	018	049	077	108	138	169	199	230	261	291	322	352	18
19	019	050	078	109	139	170	200	231	262	292	323	353	19
20	020	051	079	110	140	171	201	232	263	293	324	354	20
21	021	052	080	111	141	172	202	233	264	294	325	355	21
22	022	053	081	112	142	173	203	234	265	295	326	356	22
23	023	054	082	113	143	174	204	235	266	296	327	357	23
24	024	055	083	114	144	175	205	236	267	297	328	358	24
25	025	056	084	115	145	176	206	237	268	298	329	359	25
26	026	057	085	116	146	177	207	238	269	299	330	360	26
27	027	058	086	117	147	178	208	239	270	300	331	361	27
28	028	059	087	118	148	179	209	240	271	301	332	362	28
29	029		088	119	149	180	210	241	272	302	333	363	29
30	030		089	120	150	181	211	242	273	303	334	364	30
31	031		090		151		212	243		304		365	31

Potatoes coming straight from the field are unloaded, rocks and vines removed, and the potatoes sorted before they are loaded right back on semi trucks headed to fresh-pack shippers and processors.

Fun fact: Ten wheelers hold around 200-225 cwt.  
Semi trucks hold around 525 cwt.





## SHED ID NUMBERS

SHED ID NO.	SHIPPER
8	SunRiver of Idaho, Inc.
10	Rigby Produce, Inc.
13	Driscoll Potato, Inc.
17	Sun-Glo of Idaho, Inc.
22	LibertyGold Potato Company
24	Idaho Select, Inc.
26	High Country Potato
27	Idaho Surfresh, LLC
28	Blaine Larsen Farms, Inc.
32	Eagle Eye Produce
34	Wada Farms Potatoes, Inc.
38	Walker Produce, Inc.
48	Sun Valley Potato Growers, Inc.
49	Mart Produce Corporation
50	Magic Valley Produce, Inc.
55	Arrowhead Potato Company
69	Circle Valley Produce, LLC
70	Ball Brothers Produce
71	(Rocky Mountain Produce) Idaho Fresh Produce, Inc.
82	Nonpareil Farms — Idaho Potato Packers
84	Pleasant Valley Potato, Inc.
86	Bench Mark Potato Co.
88	GPOD of Idaho
89	Gold Emblem Produce / Taylor & Sons, Inc.
96	Walker Produce, Inc.
98	Walters Produce, Inc.
101	Moody Creek Produce, Inc.
110	Wilcox, Floyd & Sons, Inc.
167	Genesis Organics, LLC
443	Eagle Eye Produce

# Idaho® Potatoes

ARE ACTUALLY NOT A VARIETY!



The term Idaho® potatoes refers to the source of origin—the state of Idaho. While it primarily produces russets, Idaho also grows several other varieties of potatoes to meet foodservice and consumer requests.

Since 1996, the Idaho® potato shipping industry has placed the name of each variety of potato on the exterior of the cartons or bags.

Look for these designations in printed type or as a stencil on cartons, in type, or as a quick-lock-style closure on the retail bags.

## HINTS & TIPS

### AUTHENTICITY



The Grown in Idaho® seal on each carton is a certification mark designating that the potatoes inside came from Idaho. While some carton bases may also have the words Grown in Idaho® or utilize the seal in a graphic showing potato fields, only the exterior carton is required by law to show the Idaho designation. When you order, request Idaho® potatoes by name.

Note: Some shippers may have products from multiple states appearing

with the same private label. Look for the required Grown in Idaho® seal when choosing Idaho® potatoes.

### STORAGE

The Idaho Potato Commission recommends that cartons be stored with the lids on at a temperature range of 45°F–48°F.

## TRACKING INFO

In addition to the required potato-variety labeling, each foodservice carton also shows a shed number to determine which shipper packed the product. You can find this listing in the Shed ID Numbers table on this page.

Each carton also has a “pack date,” referencing the date when the potatoes were graded, washed, sorted, and placed in the carton.

The number is a three-digit code that represents the consecutive day of the year—the Julian date—starting with January 1 as 1 and ending with December 31 as 365 (366 in a leap year).

To determine the Julian dates, please see the chart on page 49 or access a Julian date converter to calculate the day/month pack date by entering this link into your Web browser:

[www.fs.fed.us/fire/partners/fepp/julian-calendar.pdf](http://www.fs.fed.us/fire/partners/fepp/julian-calendar.pdf)





Rich, volcanic soil is just one of the factors that make Idaho® potatoes so special.



Storage shed before and after 2017 harvest. Typical storage holds 8,000,000 to 10,000,000 pounds of potatoes!







# Idaho® Potato Processors

For a current list of products, please check individual websites.

## BASIC AMERICAN FOODS [www.baf.com](http://www.baf.com)

---

**Mailing Address** 415 W Collins Road | Blackfoot, ID 83221

**Corporate Office** 415 W Collins Road | Blackfoot, ID 83221

**Tel** (208) 785-3200 | **Fax** (208) 785-8776

**Contacts** Mike Villano, *VP of Foodservice Sales and Marketing*, [mwillano@baf.com](mailto:mwillano@baf.com)  
Jay Jacobs, *Director, Industrial and International Business*, [jjacobs@baf.com](mailto:jjacobs@baf.com)  
Toni Williams, *Raw Materials Accountant*, [twilliams@baf.com](mailto:twilliams@baf.com), (208) 785-8211

**Products** Custom Dehydrated Potatoes  
Dehydrated Potatoes for Foodservice Use  
Dehydrated Potatoes for Industrial Use  
Dehydrated Potatoes for Ingredient Use  
Dehydrated Potatoes for Retail Use

This company is an exporter



When it's time to harvest, it's all hands on deck!

## DICKINSON FROZEN FOODS, INC. [df-foods.com/index\\_1.html](http://df-foods.com/index_1.html)

---

**Mailing Address** 1205 E Iron Eagle Dr, Suite B | Eagle, ID 83616

**Corporate Office** 1205 E Iron Eagle Dr, Suite B | Eagle, ID 83616

**Plant Addresses** 600 NW 21st St | Fruitland, ID 83619  
903 E 3000 N | Sugar City, ID 83448

**Tel** (208) 938-7540 | **Fax** (208) 938-5969

**Email** [cservice@df-foods.com](mailto:cservice@df-foods.com)

**Contacts** Susan Williams, Sales, [susan@df-foods.com](mailto:susan@df-foods.com), (208) 452-1610  
Frank Simmons, Sales, [fsimmons@oregonpotato.com](mailto:fsimmons@oregonpotato.com), (208) 359-5033  
Monica Vanpaeppeghem, [monica@df-foods.com](mailto:monica@df-foods.com), (208) 938-7555

**Products** Custom Dehydrated Potatoes  
Dehydrated Potatoes for Foodservice Use  
Dehydrated Potatoes for Industrial Use  
Dehydrated Potatoes for Ingredient Use  
Dehydrated Potatoes for Retail Use  
Potato Starch  
Potato Flour  
Custom Frozen Potatoes  
Frozen Potatoes for Foodservice Use  
Frozen Potatoes for Industrial Use  
Frozen Potatoes for Ingredient Use  
Frozen Potatoes for Retail Use

## IDAHO PACIFIC CORPORATION [www.idahopacific.com](http://www.idahopacific.com)

---

<b>Mailing Address</b>	PO Box 478   Ririe, ID 83443
<b>Corporate Office</b>	4723 E 100 N   Ririe, ID 83442
<b>Tel</b>	(208) 538-6971   <b>Toll Free</b> 800-238-5503   <b>Fax</b> (208) 538-5082
<b>Email</b>	<a href="mailto:ipc@idahopacific.com">ipc@idahopacific.com</a>
<b>Contacts</b>	Jon Schodde, <i>Vice President Sales and Marketing</i> , <a href="mailto:schodde@idahopacific.com">schodde@idahopacific.com</a> Jeanne Harrison, <i>Industrial and Baking Sales Manager</i> , <a href="mailto:harrison@idahopacific.com">harrison@idahopacific.com</a> Julian Awdry, <i>Director of Export Sales</i> , <a href="mailto:julian@idahopacific.com">julian@idahopacific.com</a> Art Polson, <i>Director of Ingredient Sales</i> , <a href="mailto:art@idahopacific.com">art@idahopacific.com</a> Glade Williams, <i>Western Regional Foodservice Sales Manager</i> , <a href="mailto:glade@idahopacific.com">glade@idahopacific.com</a> Charles Mastruserio, <i>Eastern Regional Foodservice Sales Manager</i> , <a href="mailto:chuckm@idahopacific.com">chuckm@idahopacific.com</a>
<b>Products</b>	Custom Dehydrated Potatoes Dehydrated Potatoes for Foodservice Use Dehydrated Potatoes for Industrial Use Dehydrated Potatoes for Ingredient Use Potato Flour

This company is an exporter

## IDAHO SUPREME POTATOES, INC. [www.idahosupreme.com](http://www.idahosupreme.com)

---

<b>Mailing Address</b>	PO Box 246   Firth, ID 83236
<b>Corporate Office</b>	614 W 800 N   Firth, ID 83236
<b>Tel</b>	(208) 346-6841   <b>Fax</b> (208) 346-4104
<b>Email</b>	<a href="mailto:brad@idahosupreme.com">brad@idahosupreme.com</a>
<b>Products:</b>	Custom Dehydrated Potatoes Dehydrated Potatoes for Foodservice Use Dehydrated Potatoes for Industrial Use Dehydrated Potatoes for Ingredient Use Dehydrated Potatoes for Retail Use Potato Flour

This company is an exporter

## IDAHOAN FOODS, LLC [www.idahoan.com](http://www.idahoan.com) [www.idahoanfoodservice.com](http://www.idahoanfoodservice.com)

---

<b>Mailing Address</b>	357 Constitution Way   Idaho Falls, ID 83402
<b>Corporate Office</b>	357 Constitution Way   Idaho Falls, ID 83402
<b>Tel</b>	(208) 542-3700   <b>Toll-Free</b> 800-635-6100   <b>Fax</b> (208) 542-3797
<b>Contacts</b>	Drew Facer, <i>President and CEO</i> , <a href="mailto:dfacer@idahoan.com">dfacer@idahoan.com</a> Glen Walter, <i>Vice President Sales</i> , <a href="mailto:gwalter@idahoan.com">gwalter@idahoan.com</a> Ryan Ellis, <i>Director Marketing</i> , <a href="mailto:rellis@idahoan.com">rellis@idahoan.com</a> Chris White, <i>Director Ingredient Sales</i> , <a href="mailto:cwhite@idahoan.com">cwhite@idahoan.com</a>
<b>Products</b>	Dehydrated Potatoes for Foodservice Use Dehydrated Potatoes for Industrial Use Dehydrated Potatoes for Ingredient Use Dehydrated Potatoes for Retail Use

This company is an exporter

## LAMB WESTON [www.lambweston.com](http://www.lambweston.com)

---

**Mailing Address** 599 S Rivershore Lane | Eagle, ID 83616

**Corporate Office** 599 S Rivershore Lane | Eagle, ID 83616

**Tel** (208) 938-1047 | **Toll-Free** 800-766-7783 | **Fax** (208) 658-2201

**Contact** Rick Rose, *VP, Supply Chain*, rick.rose@lambweston.com  
Mike Smith, *SVP/GM Growth and Strategy*, mike.smith@lambweston.com  
Sharon Miller, *SVP/GM, Global Business Unit*, sharon.miller@lambweston.com  
Rod Hepponstall, *SVP/GM, Foodservice & Retail Business Unit*, rod.hepponstall@lambweston.com

**Products** Frozen Potatoes for Foodservice Use  
Frozen Potatoes for Industrial Use  
Frozen Potatoes for Ingredient Use  
Frozen Potatoes for Retail Use

This company is an exporter

## McCain Foods USA, Inc. [www.mccainusa.com](http://www.mccainusa.com)

---

**Mailing Address** 2275 Cabot Drive | Lisle, IL 60532

**Corporate Office** 2275 Cabot Drive | Lisle, IL 60532

**Tel** (630) 955-0400 | **Toll-Free** 800-938-7799 | **Fax** (630) 857-4560

**Email** webmaster@mccain.com

**Contacts** Ryan Malone, *Senior Director, Marketing, Foodservice and Retail Potatoes*, Ryan.Malone@mccain.com  
Maria Ellis, *Vice President, Marketing and Innovation*, Maria.Ellis@mccain.com

**Products** Frozen Potatoes for Foodservice Use  
Frozen Potatoes for Industrial Use  
Frozen Potatoes for Retail Use

This company is an exporter

## Potato Products of Idaho [www.ppidaho.com](http://www.ppidaho.com)

---

**Mailing Address** 398 North Yellowstone Highway | Rigby, ID 83442

**Tel** (208) 745-8610 | **Fax** (208) 745-8665

**Contacts** Tom Kilburg, *Director of Sales*, tkilburg@ppidaho.com  
Brent Mickelsen, *Operation and Sales*, bmick@ppidaho.com

**Products** Frozen Potatoes for Foodservice Use      Refrigerated Potatoes for Foodservice Use  
Frozen Potatoes for Industrial Use      Refrigerated Potatoes for Industrial Use  
Frozen Potatoes for Ingredient Use      Refrigerated Potatoes for Ingredient Use  
Frozen Potatoes for Retail Use      Refrigerated Potatoes for Retail Use

This company is an exporter

## RITE STUFF FOODS, INC. [www.ritestuff.com](http://www.ritestuff.com)

---

**Mailing Address** PO Box 447 | Jerome, ID 83338

**Corporate Office** 2155 South Lincoln | Jerome, ID 83338

**Tel** (208) 324-8410 | (208) 433-8111 | **Fax** (208) 324-1210

**Email** [dmoore@ritestuff.com](mailto:dmoore@ritestuff.com) or [mtutterow@ritestuff.com](mailto:mtutterow@ritestuff.com)

**Contacts** Dave Moore, *Director of Sales/Marketing/International*, [dmoore@ritestuff.com](mailto:dmoore@ritestuff.com)  
Jim Madden, *General Manager*, [jmadden@ritestuff.com](mailto:jmadden@ritestuff.com)  
Mary Tutterow, *National Accounts*, [mtutterow@ritestuff.com](mailto:mtutterow@ritestuff.com)  
Tom Madden, *President*, [tmadden@ritestuff.com](mailto:tmadden@ritestuff.com)

<b>Products</b>	Custom Frozen Potatoes	Battered and Breaded Potato Wedges
	Frozen Potatoes for Foodservice Use	Formed Potato Products
	Frozen Potatoes for Industrial Use	Fried and Filled Potato Skins
	Frozen Potatoes for Ingredient Use	Potato Half Shells
	Frozen Potatoes for Retail Use	Mashed Potatoes

This company is an exporter

## SIMPLIT, J.R. COMPANY [www.simplotfoods.com](http://www.simplotfoods.com)

---

**Mailing Address** 1099W Front Street | Boise, ID 83702

**Corporate Office** 1099W Front Street | Boise, ID 83702

**Tel** (208) 336-2110 | **Toll-Free** 800-635-0408 | **Fax** (208) 384-8022

**Contacts** Steve Patterson, *VP Global Sales and Marketing*, [steve.patterson@simplot.com](mailto:steve.patterson@simplot.com)

**Products:** Dehydrated Potatoes for Foodservice Use  
Custom Frozen Potatoes  
Frozen Potatoes for Foodservice Use  
Frozen Potatoes for Industrial Use  
Frozen Potatoes for Ingredient Use  
Frozen Potatoes for Retail Use

This company is an exporter

Some for now and some for later as part of the potatoes are loaded into storage for another day, and part are headed to be processed or packed now.



# Above *and* Beyond



## 2018 SHIPPER & PROCESSOR DIRECTORY

PO Box 1670 | 661 S Rivershore Lane, Suite 230  
Eagle, ID 83616 | (208) 334-2350

[www.idahopotato.com/directory](http://www.idahopotato.com/directory)

Bookmark and visit this link for the most current directory listings.